



**MAIN MENU**



# CLICKABLE CATALOG



**METALWORKING SOLUTIONS | SAFETY SOLUTIONS | VENDOR MANAGED SOLUTIONS**  
**ROBOTICS | PROCESS SOLUTIONS | MATERIAL HANDLING & STORAGE SOLUTIONS**  
**MILL SUPPLIES | OIL/GAS MEASUREMENT & INSPECTION**

# MENU



## METALWORKING SOLUTIONS

[CLICK HERE TO VISIT METALWORKING ON OUR WEBSITE!](#)



## PROCESS SOLUTIONS

[CLICK HERE TO VISIT PROCESS SOLUTIONS ON OUR WEBSITE!](#)



## SAFETY SOLUTIONS

[CLICK HERE TO VISIT SAFETY SOLUTIONS ON OUR WEBSITE!](#)



## MATERIAL HANDLING & STORAGE SOLUTIONS

[CLICK HERE TO VISIT MATERIAL HANDLING ON OUR WEBSITE!](#)



## VENDOR MANAGED SOLUTIONS

[CLICK HERE TO VISIT VENDOR MANAGED SOLUTIONS ON OUR WEBSITE!](#)



## MILL SUPPLIES

[CLICK HERE TO VISIT MILL SUPPLIES ON OUR WEBSITE!](#)



## ROBOTICS

[CLICK HERE TO VISIT ROBOTICS ON OUR WEBSITE!](#)



## PETROLEUM MEASUREMENT/ INSPECTION EQUIPMENT & REPAIR

[CLICK HERE TO VISIT PETROLEUM MEASUREMENT ON OUR WEBSITE!](#)

[SHOP.AM-IND.COM](http://SHOP.AM-IND.COM) | [WWW.AM-IND.COM](http://WWW.AM-IND.COM)

Headquarters & NJ Sales Office  
Rahway, NJ  
800.864.2660

New England Regional Office  
Springfield, VT  
800.225.6711

Northern NJ Regional Office  
Fair Lawn, NJ  
800.622.1363

CT Regional Office  
Seymour, CT  
800.771.1233

PA Regional Office  
Stroudsburg, PA  
855.207.0400







# METALWORKING SOLUTIONS

CLICK HERE TO VISIT THE METALWORKING SOLUTIONS PAGE ON OUR WEBSITE!

## INDUSTRY EXPERTISE FOR MACHINE SHOPS AND METAL FABRICATORS

Our Cutting & Precision Tools group specialize in the sale and application of high speed steel (HSS) and carbide cutting tools, both solid and indexable, Abrasives, Lubricants and Coolants. We work with your machinists to introduce new tooling geometries/grades and the latest abrasive grains and coolants that increase tool and sump life, and Workholding for precision, performance and productivity.



### Focused on Lean Skills

A&M seasoned professionals understand the requirements for precision and accuracy. We work in partnership with our manufacturers to evaluate customer usage, materials and application needs to lower cycle times and reduce tooling cost. Each member of our Cutting Tools group averages twenty five years working in a machine shop, metalworking or machine tooling company. Our metalworking specialists advise on product choice based on application and will provide technical and safety training on request.

### Experienced Team

Our machinery specialists provide you with the manufacturing and metal fabrication machinery that best fits the requirements of the application, and with products from leading manufacturers. Our sales team has decades of industry experience and are always available to answer any questions.

### Premium Brands Increase ROI

Our pledge is to contribute true value to our customers by providing efficient, durable tools for all applications, to reduce cycle times and provide application support at the spindle. Whether its high performing abrasives to last longer and run cooler, an innovative tooling technology or the application-specific lubricant, the A&M Cutting Tool Specialists are a reliable partner.



Click on the logo to go to that manufacturer's section.



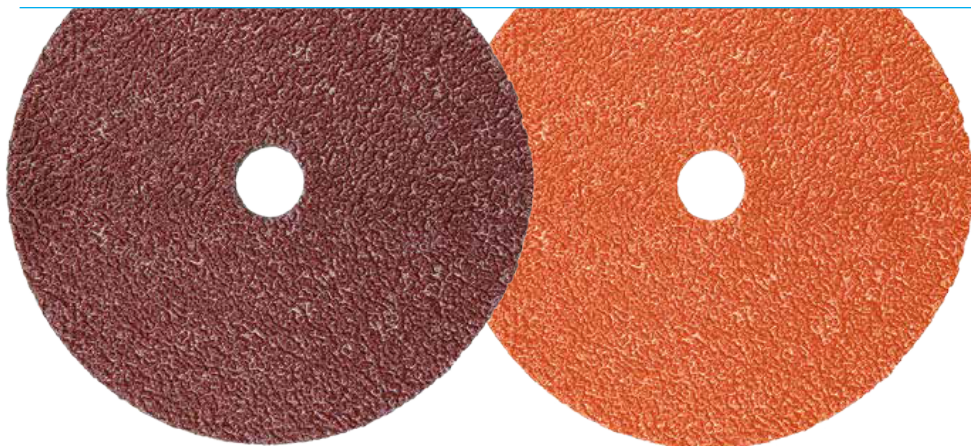
METALWORKING  
SOLUTIONS

## 3M™ FIBRE DISCS 782C AND 787C

AN UNBEATABLE COMBINATION OF PERFORMANCE AND VALUE

3M™ Fibre Discs 782C and 787C represent a new class of high-performance, right-angle abrasives – powered by the legendary speed and long life of 3M Precision-Shaped Grain. They are an ideal choice for applications like weld removal, beveling, edge chamfering and more – offering a faster cut and longer life than alumina zirconia (AZ) and conventional ceramic abrasives. 3M™ Fibre Disc 782C is an ideal choice for carbon steel. 3M™ Fibre Disc 787C is optimized for stainless steel and non-ferrous metals like aluminum.

- Premium mineral excels at heavyweight applications such as weld grinding, beveling, and edge chamfering
- 3M Precision Shaped Grain yields higher cut rates while completing more parts per disc than conventional discs
- Stiff fiber backing and strong resin bond provide durability and tear-resistance
- Compatible with 3M™ disc pad face plates and hubs (sold separately)



### 3M™ FIBRE DISC 782C

FOR CARBON STEEL

Your ideal choice for carbon steel – offering a faster cut and longer life than alumina zirconia (AZ) and conventional ceramic abrasives. These discs also require less grinding pressure for easier operation.

- Rapidly cuts carbon steel
- Stiff fiber backing and strong resin bond provide durability and tear-resistance

### 3M™ FIBRE DISC 787C

FOR STAINLESS STEEL AND MORE

Optimized for stainless steel and non-ferrous metals like aluminum and titanium. Cuts cooler, faster and lasts longer than conventional ceramic discs in applications like weld removal, beveling, edge chamfering and more.

- Rapidly cuts hard to grind metals like stainless steel and high nickel alloys
- Grinding aid minimizes grinding temperatures for heat-sensitive alloys

**BUY NOW!**

**3M**

### 3M™ Fibre Disc 782C for carbon steel

Diameter (inches)	Grade	UPC (76308-)	Max RPM
4-1/2 × 7/8	36+	89589-1	13,300
	60+	89598-3	13,300
	80+	89607-2	13,300
5 × 7/8	36+	89590-7	12,000
	60+	89599-0	12,000
	80+	89608-9	12,000
7 × 7/8	36+	89591-4	8,600
	60+	89600-3	8,600
	80+	89609-6	8,600
9-1/8 × 7/8	36+	89592-1	6,600
	60+	89601-0	6,600
	80+	89610-2	6,600

### 3M™ Fibre Disc 787C for stainless steel

Diameter (inches)	Grade	UPC (76308-)	Max RPM
4-1/2 × 7/8	36+	89627-0	13,300
	60+	89636-2	13,300
	80+	89645-4	13,300
	120+	89654-6	13,300
5 × 7/8	36+	89628-7	12,000
	60+	89637-9	12,000
	80+	89646-1	12,000
	120+	89655-3	12,000
7 × 7/8	36+	89629-4	8,600
	60+	89638-6	8,600
	80+	89647-8	8,600
	120+	89656-0	8,600
9-1/8 × 7/8	36+	89630-0	6,600
	60+	89639-3	6,600
	80+	89648-5	6,600
	120+	89657-7	6,600





METALWORKING  
SOLUTIONS



## 3M™ FLAP DISCS 769F EVERYDAY VALUE. EXCEPTIONAL PERFORMANCE

These value-priced discs harness the power of 3M Precision-Shaped Grain and the versatility of flap discs, all at a price that's affordable for everyday use. Get dependable performance with fewer disc changes – and get more work done over the life of your disc.

**BUY NOW!**

**3M**



- Delivers long-lasting high performance and versatility at a value price
- Contains 3M Precision-Shaped Grain, which cuts faster and lasts longer than conventional abrasive grain
- Proven to outperform traditional alumina zirconia flap discs
- Individual flaps break down, exposing fresh mineral to deliver consistent cut rate for the life of the disc
- Ideal for use on carbon steel, stainless steel and other heat-sensitive alloys
- Covers a wide range of applications from weld grinding and beveling to surface prep

### TECH TIP:

In many cases, 3M™ Flap Disc 769F will allow you to grind and finish in one step, without changing abrasives. This is because, under normal conditions, 769F will generate a finish that is one grade finer than a fiber disc of the same grade. While a fiber disc will cut faster, this flap disc can eliminate steps and disc change-outs to help save you time.



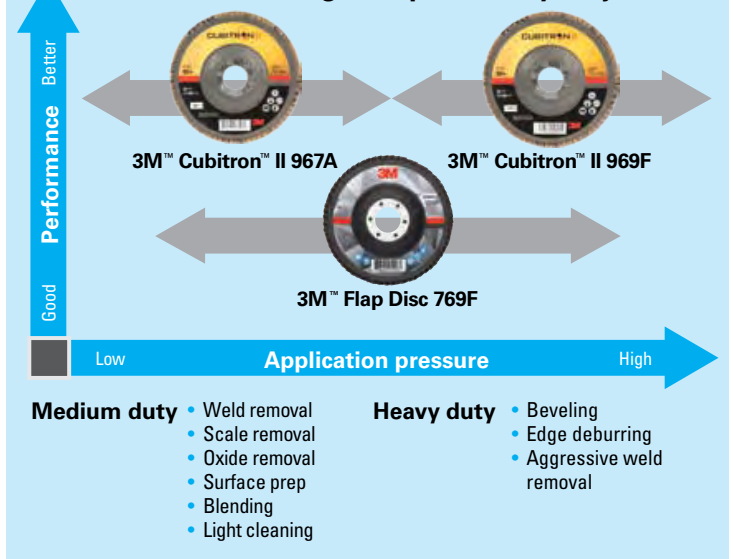
### 3M™ Flap Discs 769F

TYPE 27					TYPE 29				
UPC (0-06-38060-) unless otherwise specified	Grade	Diameter × Center Hole (inches)	Max. RPM (MOS)	Qty/Case	UPC (0-06-38060-) unless otherwise specified	Grade	Diameter × Center Hole (inches)	Max. RPM (MOS)	Qty/Case
05903-6	40+	4-1/2 × 7/8	13,300	10	05906-7	40+	4-1/2 × 7/8	13,300	10
05904-3	60+				05907-4	60+			
05905-0	80+				05908-1	80+			
05924-1	120+	5 × 7/8	12,000	10	05925-8	120+	5 × 7/8	12,000	10
05915-9	40+				05916-6	40+			
05918-0	60+				05917-3	60+			
05919-7	80+				05920-3	80+			
05928-9	120+	7 × 7/8	8,600	5	05929-6	120+	7 × 7/8	8,600	5
05909-8	40+				05912-8	40+			
05910-4	60+				05913-5	60+			
05911-1	80+				05914-2	80+			
05926-5	120+				05927-2	120+			

### Quick Change Hub Attachment – plastic hub is both rugged and lightweight!

05933-3	40+	4-1/2 × 5/8-11	13,300	10	05937-1	40+	4-1/2 × 5/8-11	13,300	10
05934-0	60+				05938-8	60+			
05935-7	80+				05939-5	80+			
05936-4	120+	5 × 5/8-11	12,000	10	05947-0	40+	5 × 5/8-11	12,000	10
05946-3	40+				05948-7	60+			
05949-4	60+				05951-7	80+			
05950-0	80+	7 × 5/8-11	8,600	5	05943-2	40+	7 × 5/8-11	8,600	5
05940-1	40+				05944-9	60+			
05941-8	60+				05945-6	80+			
05942-5	80+								

### Choose the right Flap Disc for your job.



METALWORKING  
SOLUTIONS

## 3M™ CUBITRON™ II CUT & GRIND WHEELS

CUT – GRIND – DONE

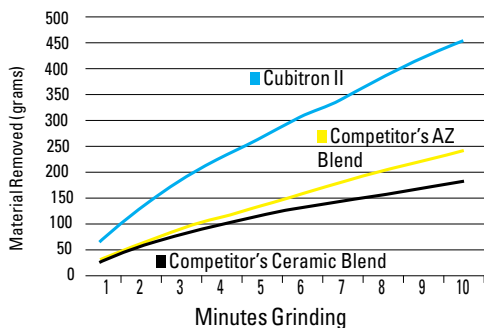
These versatile wheels are designed to be used both as a depressed center grinding wheel and as a cut-off wheel – making them ideal for cutting, grinding, gouging and more. After 10 minutes of use, they nearly doubled the output of our closest competitor while removing nearly 2x the material.

BUY NOW!

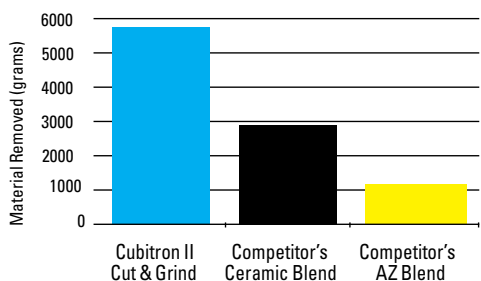
3M



**3M™ Cubitron™ II Cut & Grind Wheels Cut Faster!** After 10 min., nearly double the output of our closest competitor



**3M™ Cubitron™ II Cut & Grind Wheels Last Longer!** Removes nearly 2x the material, compared to our closest competitor



### 3M™ Cubitron™ II Cut & Grind Wheels — T27

Diameter × Thickness × Arbor Hole (inches)	UPC	Max. RPM	Quantity (Inner/Case)
4 × 1/8 × 3/8	04046719-82276-8	15,300	10/20
4 × 1/8 × 5/8	04046719-82277-5	15,300	10/20
5 × 1/8 × 7/8	04046719-82278-2	12,250	10/20
4-1/2 × 1/8 × 7/8	04046719-82279-9	13,300	10/20
6 × 1/8 × 7/8	051141-28758-4	10,200	10/20
7 × 1/8 × 7/8	051141-28760-7	8,500	10/20
9 × 1/8 × 7/8	051141-28761-4	6,650	10/20

### 3M™ Cubitron™ II Cut & Grind Wheels — T27 Quick Change

Diameter × Thickness × Arbor Hole (inches)	UPC	Max. RPM	Quantity (Inner/Case)
4-1/2 × 1/8 × 5/8-11	051141-28762-1	13,300	10/20
5 × 1/8 × 5/8-11	051141-28763-8	12,250	10/20
6 × 1/8 × 5/8-11	051141-28764-5	10,200	10/20
7 × 1/8 × 5/8-11	051141-28765-2	8,500	10/20
9 × 1/8 × 5/8-11	051141-28766-9	6,650	10/20



METALWORKING  
SOLUTIONS

## 3M™ CUBITRON™ II CUT-OFF WHEELS

CUT TO THE CHASE

Cubitron II Cut-Off Wheels are designed to provide high cut rates on all types of ferrous metals, stainless steels, alloy steels and cast iron. They offer long life to help reduce cost. Plus, their fast, cool cutting action helps make your job easier!

BUY NOW!

3M



- 3M™ Cubitron™ II cut-off wheels with precision-shaped grain are engineered to cut faster than competitive ceramic products, offering significant productivity gains
- Triangular shaped ceramic grain wears evenly, runs cool, and optimizes mineral breakdown, for extra long life
- Rigid, reinforced resin-bonded wheel slices through almost all materials including stainless steel, mild steel, and aerospace alloys
- Wheel must have a maximum operating speed greater than or equal to the maximum speed of the power tool used
- MUST BE USED WITH A WHEEL GUARD THAT FITS THE SIZE OF THE CUT-OFF WHEEL

### 3M™ Cubitron™ II Cut-Off Wheel – T1

Diameter x Thickness x Arbor Hole (inches)	UPC	Max. RPM	Quantity (Inner/Case)
3 x .035 x 1/4	051115-66513-4	25,465	25/50
3 x .035 x 3/8	051115-66514-1	25,465	25/50
3 x .06 x 3/8	051115-66516-5	25,465	25/50
4 x .035 x 3/8	051115-66518-9	19,100	25/50
4 x .06 x 3/8	051115-66520-2	19,100	25/50
4 x .125 x 3/8	051115-66524-0	19,100	25/50
4-1/2 x .040 x 7/8	051125-86929-4	13,300	25/50
4-1/2 x .045 x 7/8	051115-66525-7	13,300	25/50
5 x .040 x 7/8	051125-86930-0	12,250	25/50
5 x .045 x 7/8	051115-66526-4	12,250	25/50
6 x .045 x 7/8	051115-66527-1	10,200	25/50
7 x .045 x 7/8	051115-66528-8	8,500	25/50

### 3M™ Cubitron™ II Cut-Off Wheel – T27

Diameter x Thickness x Arbor Hole (inches)	UPC	Max. RPM	Quantity (Inner/Case)
4-1/2 x .040 x 7/8	051125-86946-1	13,300	25/50
4-1/2 x .045 x 7/8	051115-66531-8	13,300	25/50
4-1/2 x .125 x 7/8	051115-66535-6	13,300	25/50
5 x .040 x 7/8	051125-86945-4	12,250	25/50
5 x .045 x 7/8	051115-66537-0	12,250	25/50
5 x .09 x 7/8	051115-66539-4	12,250	25/50
6 x .045 x 7/8	051115-66541-7	10,200	25/50
7 x .09 x 7/8	051115-66543-1	8,500	25/50

### 3M™ Cubitron™ II Cut-Off Wheel – T27 Quick Change

Diameter x Thickness x Arbor Hole (inches)	UPC	Max. RPM	Quantity (Inner/Case)
4-1/2 x .045 x 5/8-11	051115-66530-1	13,300	25/50
4-1/2 x .09 x 5/8-11	051115-66532-5	13,300	25/50
4-1/2 x .125 x 5/8-11	051115-66534-9	13,300	25/50
6 x .045 x 5/8-11	051115-66540-0	10,200	25/50
7 x .09 x 5/8-11	051115-66542-4	8,500	25/50



METALWORKING  
SOLUTIONS



## SCOTCH-BRITE™ CLEAN AND STRIP XT PRO DISCS

SPEED WITHOUT COMPROMISE

Upgrade to the Scotch-Brite™ Clean and Strip XT Pro or XT Pro Extra Cut for rust and coating removal. Delivering the uncompromising results metalworkers have come to expect from Scotch-Brite™ Clean and Strip discs, with a faster speed rating, convenient quick-change threaded hub and extended life.

- Quickly removes rust, paint, mill scale and coatings from metal
- High-strength fiber resists chunking and performs well on edges
- High conformability provides a larger contact patch for faster removal rates
- Silicon carbide mineral cuts aggressively and leaves a fine finish
- Resists loading for consistent cutting action
- High speed rating, low vibration and low spark

### Scotch-Brite™ Clean & Strip XT Pro Disc

Diameter x Center Hole (inches)	UPC	Type	Grade	Max. RPM	Qty/ Case
4-1/2 x 5/8-11	0-06-38060-05574-8	Type 27 Quick Change	S XCS	13,300	10
4-1/2 x 7/8	0-06-38060-05586-1	Type 27	S XCS	13,300	10
4-1/2 x 5/8-11*	0-06-38060-05588-5	TN Quick Change	S XCS	13,300	10
7 x 7/8	0-06-38060-05587-8	Type 27	S XCS	8,600	5
7 x 5/8-11	0-00-76308-45481-4	Type 27 Quick Change	S XCS	8,600	5

### Scotch-Brite™ Roloc™ Clean & Strip XT Pro Disc

3 x NH	0-06-38060-21540-1	TR	S XCS	15,000	10
--------	--------------------	----	-------	--------	----

### Scotch-Brite™ Clean & Strip XT Pro Extra Cut Disc

Diameter x Center Hole (inches)	UPC	Type	Grade	Max. RPM	Qty/ Case
4-1/2 x 5/8-11	0-06-38060-21050-5	Type 27 Quick Change	A XCS	13,300	10
4-1/2 x 7/8	0-06-38060-21032-1	Type 27	A XCS	13,300	10
4-1/2 x 5/8-11*	0-06-38060-21037-6	TN Quick Change	A XCS	13,300	10
7 x 5/8-11	0-06-38060-21055-0	Type 27 Quick Change	A XCS	8,600	5
7 x 7/8	0-06-38060-21036-9	Type 27	A XCS	8,600	5

### Scotch-Brite™ Roloc™ Clean & Strip XT Pro Extra Cut Disc

3 x NH	0-06-38060-21544-9	TR	A XCS	15,000	10
--------	--------------------	----	-------	--------	----

\*Quick Change Tinneman Nut Attachment

BUY NOW!

3M

## CHOOSE THE DISC THAT'S RIGHT FOR YOU.

### XT Pro

- Rust, paint, light mill scale removal
- Maintains workpiece shape
- Low sparking
- Ideal for surface prep
- Made with silicon carbide mineral



### BOTH

- Rapid coating removal and surface prep
- Decreased chunking – extended life
- Highly conformable
- High speed rating
- Quick-change, spin-on thread



### XT Pro Extra Cut

- Heavy rust and rust pit removal without leaving divots
- Thick paint and coating removal
- Weld refinement and removing weld discoloration
- Cuts to bare metal quickly
- Ideal for adhesion prep
- Made with aluminum oxide mineral



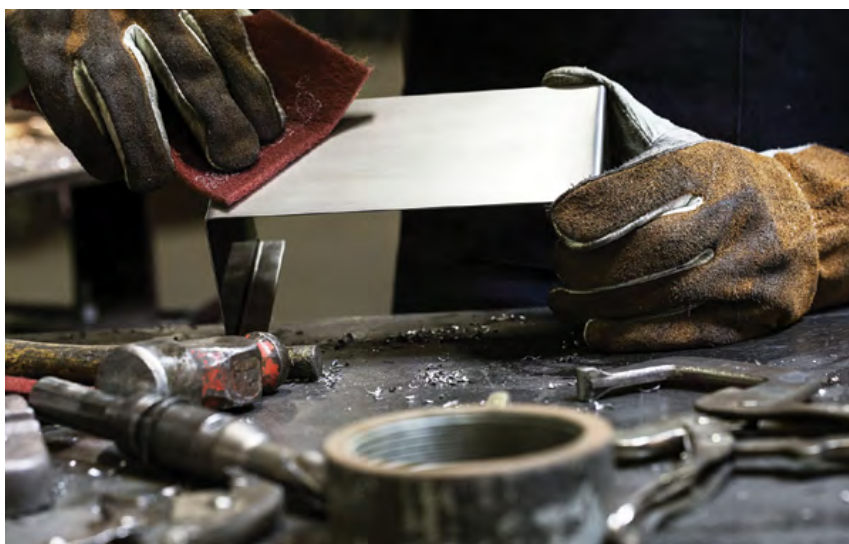
METALWORKING  
SOLUTIONS

## 3M™ HAND PADS

THE LEADER IN NONWOVEN HAND PADS

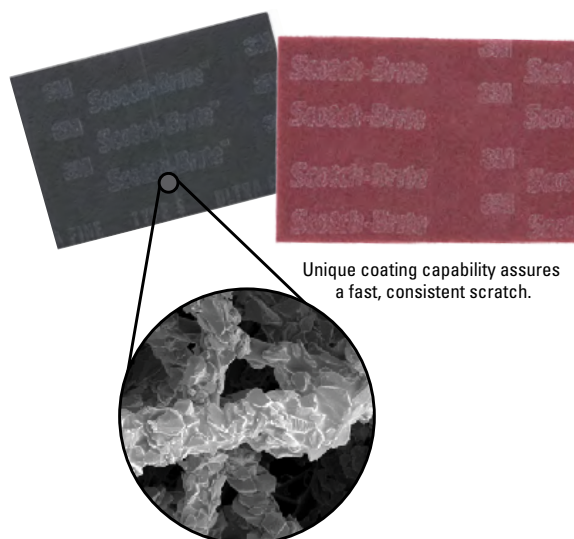
Generations of metalworking professionals have trusted Scotch-Brite™ Hand Pads as their go-to solution for cleaning, scuffing, deburring and finishing in their shops. Through the decades, Scotch-Brite™ has continually improved the performance and durability of its industry-leading hand pad products, earning their place in metalworking shops around the world. For fast, consistent surface conditioning, keep Scotch-Brite™ Hand Pads within reach.

- Cuts fast to remove contaminants and oxides in the most demanding cleaning and finishing applications
- Leaves a consistent, uniform scratch on just about any surface
- Available in multiple grades and is flexible enough to get into hard-to-reach places
- Easy to fold and bend for use on corners and hard-to-reach areas
- Quickly removes weld burn discoloration



## 3M Scotch-Brite™ Hand Pads

Product	Part #
Scotch-Brite™ Heavy Duty Hand Pad 7440	291522
Scotch-Brite™ Light Cleansing Hand Pad 7445, HP-HP, Nepheline Syenite Super Fine, White	166959
Scotch-Brite™ Blending Hand Pad, 7446	24497
Scotch-Brite™ Hand Pad 7447, HP-HP, A/O Very Fine, Maroon	23303
Scotch-Brite™ 7447 PRO Hand Pad	4653016
Scotch-Brite™ Hand Pad 7448, HP-HP, SiC Ultra Fine, G	20441



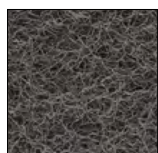
Less Aggressive/Finer Finish



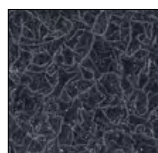
More Aggressive/Coarser Finish



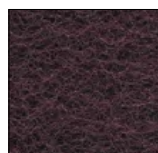
7445  
(S ULF)



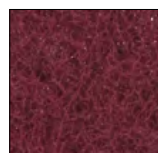
7448  
(S ULF)



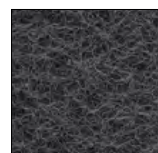
7448 PRO  
(S ULF)



7447  
(A VFN)



7447 PRO  
(A VFN)



7446  
(A CRS)



7440  
(A CRS)

S = Silicon carbide A = Aluminum oxide

ULF = Ultra Fine VFN = Very Fine CRS = Coarse

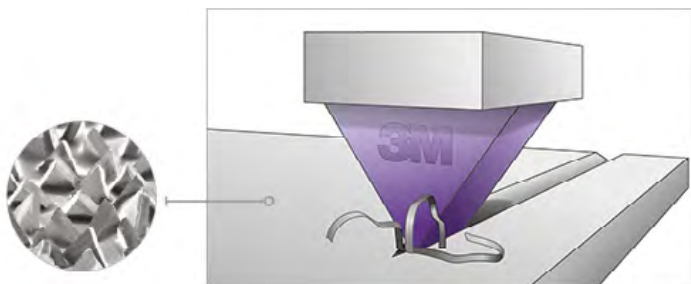
METALWORKING  
SOLUTIONS

## 3M™ XTRACT CUBITRON II NET DISC

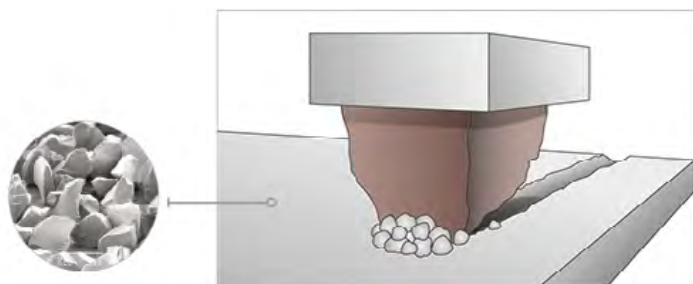
GO FOR PERFORMANCE. LEAVE THE DUST BEHIND

For sanding wood, metal and composites, 3M Xtract™ net discs offer industry-leading cut-rate and help maintain a cleaner work environment, resulting in better performance and improved results.

- Features 3M Precision-Shaped Grain mineral mixed with aluminum oxide abrasive for a fast cut and long life
- Allows for a cleaner work environment than traditional discs with dust extraction holes
- Hook-and-loop backing for quick and easy disc changes
- Ideal for a wide variety of substrates and applications including stock removal and fine finishing



**3M Precision-Shaped Grain** uses 3M micro replication technology to form sharp peaks that easily “slice” through metal-cutting cooler, faster and lasting longer than conventional abrasive grain.



**Conventional ceramic abrasive grain** tends to “plow” through the metal, causing heat to build up in the workpiece and the abrasive – resulting in a slower cut and shorter abrasive life.

**BUY NOW!**

**3M**

## 3M Xtract™ Cubitron™ II Net Discs 710W

Product	Part #
Xtract™ Cubitron™ II Net Discs 710W 5" Disc Size, 80 Grit	5131477
Xtract™ Cubitron™ II Net Discs 710W 5" Disc Size, 120 Grit	5131465
Xtract™ Cubitron™ II Net Discs 710W 5" Disc Size, 150 Grit	5131467
Xtract™ Cubitron™ II Net Discs 710W 5" Disc Size, 180 Grit	5131469
Xtract™ Cubitron™ II Net Discs 710W 5" Disc Size, 220 Grit	5131471
Xtract™ Cubitron™ II Net Discs 710W 5" Disc Size, 240 Grit	5131473
Xtract™ Cubitron™ II Net Discs 710W 5" Disc Size, 320 Grit	5131475
Xtract™ Cubitron™ II Net Discs 710W 6" Disc Size, 80 Grit	5131478
Xtract™ Cubitron™ II Net Discs 710W 6" Disc Size, 120 Grit	5131466
Xtract™ Cubitron™ II Net Discs 710W 6" Disc Size, 150 Grit	5131468
Xtract™ Cubitron™ II Net Discs 710W 6" Disc Size, 180 Grit	5131470
Xtract™ Cubitron™ II Net Discs 710W 6" Disc Size, 220 Grit	5131472
Xtract™ Cubitron™ II Net Discs 710W 6" Disc Size, 240 Grit	5131474
Xtract™ Cubitron™ II Net Discs 710W 6" Disc Size, 320 Grit	5131476





METALWORKING  
SOLUTIONS



## TRIM® MICROSOL® 585XT

PART 72761778

**TRIM MicroSol 585XT is a high-lubricity, semisynthetic, microemulsion coolant. It's well suited for machining/grinding gray iron, mixed metal, and titanium alloys.**

- Dramatically extends useful life without the need for tank-side biocides or fungicides
- Contains no nitrites, triazines, phenols, and chlorinated or sulfurized EP additives
- Provides superior corrosion inhibition on all ferrous and nonferrous metals
- Keeps machines clean while leaving a soft fluid film for ease of cleaning and reduced maintenance
- Low foaming for today's demanding high-pressure, high-volume applications

**BUY NOW!**



**Master Fluid  
SOLUTIONS®**

## TRIM® MICROSOL® 642RX PART 641238081494

**TRIM MicroSol 642RX is a specifically formulated microemulsion coolant for the medical device industry and is free of animal-derived raw materials.**

- Conformance to EH&S requirements for the medical industry
- Halogen-free formulation
- Superior corrosion inhibition on all ferrous and nonferrous metals
- High machine cleanliness while leaving a soft fluid film for ease of cleaning and reduced maintenance
- The fluid of choice for medical instruments, ortho-instruments, prosthetic devices, endoscopy, and surgical tools



## TRIM® MICROSOL® 692XT PART 14998140

**TRIM MicroSol 692XT is a high-lubricity, semisynthetic, microemulsion coolant. Compatible with many materials including titanium, high nickel alloys, steels, copper, and aluminum alloys.**

- Improved lubricity for longer tool life
- Excellent alternative to chlorinated soluble oils on high-silica aluminum alloys
- Keeps machines very clean while leaving a soft fluid film for ease of cleaning and reduced maintenance
- Requires no special disposal or recycling techniques
- Aerospace-approved



METALWORKING  
SOLUTIONS**TRIM® E923** PART 14998157

**TRIM E923 is a proprietary blend of vegetable-based technology and high levels of chlorine-free, extreme-pressure (EP) additives to yield an extreme performance, low-management, metal removal fluid.**

- Delivers exceptional lubricity and EP performance
- Has the necessary performance to replace neat oils in certain applications
- Compatible with all materials excluding magnesium
- Easily recycled or disposed of without special handling or equipment
- Will run effectively for long periods without the need for costly additives

**BUY NOW!****Master Fluid**  
SOLUTIONS®**MASTER STAGES™ CLEAN F2™** PART 56553191

**Master STAGES™ CLEAN F2™ is a super concentrate that does an outstanding job in floor cleaning and other multi-purpose uses**

- Will remove heavy soils from floors without lifting off floor paints, coatings, or leaving a slippery residue; suitable for concrete, painted, tile, or linoleum floors
- Formulated without silicates or other high pH additives, CLEAN F2 is compatible with ultrafiltration systems and bioremediation
- Excellent choice for use in spray bottles up to 20%
- Environmental approvals are simplified because CLEAN F2 contains no nitrites, barium, phenols, or butyl cellusolve; and has very low V.O.C. content and no SARA 313 reportable ingredients
- Ideal for automatic floor scrubbers, along with general-purpose cleaning, mop bucket cleaning, and parts washing in room temperature wash tanks



*Global leader in  
innovation and technology*

**Master Fluid**  
SOLUTIONS®*In-depth market knowledge*

Servicing global manufacturers in our target areas, we make it our business to know and respond to these major markets:

- > aerospace
- > medical devices
- > automotive
- > defense and law enforcement
- > industrial parts production
- > agriculture and construction
- > energy exploration and production

*Business partnership*

We earn and value your trust based on:

- > our corporate culture of integrity, focus, and commitment
- > our worldwide team of skilled sales and tech service professionals
- > our quality, consistent, innovation solutions
- > our commitment to the environment





**METALWORKING  
SOLUTIONS**



## UNIVERSAL BACK PLUNGER DIAL INDICATOR 196B1



The Starrett 196 Universal Back Plunger Dial Indicator features graduations to .001" and 0.02mm that handle by far the majority of jobs. Shank diameter is 1/4" (6.3mm). Antimagnetic models are also available - (inch reading) 196A6Z and 196B6. For full use, the operator first chooses the proper contact from the three hardened contact points that come with each model. Then the contact should be brought against the work with enough pressure to give the hand one full turn. Set the hand at zero by rotating the dial with the knurled bezel. This provides one full rotation of the hand both to the right and left of zero, showing a rise or drop in the work and the amount of that variation. 0-100 with 3 Contact Points and Adapter only. This provides one full rotation of the hand both to the right and left of zero, showing a rise or drop in the work and the amount of that variation.

**BUY NOW!**

**Starrett®**

## DIAL INDICATOR 25-109J

The Starrett 25 Series Dial Indicator has shockless, hardened steel gear train and jewel bearings, except where noted. It is furnished with a lug-on-center back. Antimagnetic mechanism is optional for all models. Special non-shock mechanism is available for all models except 25-109, 25-209 and 25-116. .015" Range, Dial Reading 0-3-0, .00005" Grad.



## GROUP 1 ELECTRONIC INDICATOR

F2715IQ

The Starrett 2700 Electronic Indicator will make absolute, incremental and/or comparative measurements and implement all the features of 2700 series Indicators. System is suitable for any stand-alone gaging application. .400" (10mm) Range.



## DIAL BORE GAGE 3089Z-131-1424J

The Starrett 3089 Series Dial Bore Gage offers precision, a full complement of features and excellent value. 1.4" - 2.4" Range; 6 Contacts.



## MACHINIST LEVEL WITH GROUND AND GRADUATED VIAL, 98-4



The Starrett 98 Machinist Level with Ground and Graduated Vial includes a cross test vial. 300mm (12") size, without case.

## STAINLESS STEEL ENGLISH THICKNESS GAGE 66BS

The Starrett Imperial Thickness Gage is used in automotive, aviation, diesel and farm equipment manufacture and service and also in jig, fixture, gage and experimental work. Especially useful in adjusting tappets, spark plugs, distributor points, checking bearing clearances and gear play, fitting pistons, rings and pins and gaging narrow slots.

Made in a wide range of types and sizes, each having from 6 up to 26 leaves ranging in thickness from .0015-.200" and 0.03-5mm thick straight or tapered. 31 Straight Leaves, 1/2 x 3 1/32", .0015-.035" Range.



METALWORKING  
SOLUTIONS

BUY NOW!

Starrett®

**RECTANGULAR HIGH GRADE STEEL GAGE BLOCK SET**

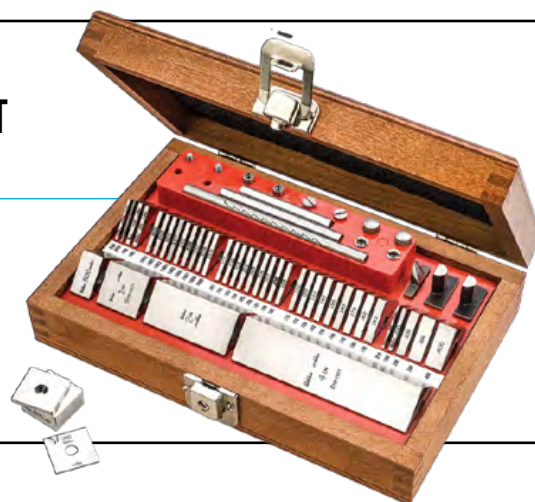
RS 9. A19, GRADE A

Measuring Range (Inch): .0625 through 4.000 (steps of .0625), .100 through 4.000 (steps of .100). Blocks Included In Sets: 1 block .0625, .100, .125, .200, .250, .300, .500, 1.000, 2.000.

**36 PIECE SQUARE CROBLOX CHROMIUM CARBIDE GAGE BLOCK SET**

SC 36. A1, GRADE A

Measuring Range (Inch): .200 through 8.000 (steps of .001), .300 through 8.000 (steps of .0001). Blocks Included In Sets: 1 block .050, 9 blocks .1001 through .1009 (steps of .0001), 9 blocks .101 through .109 (steps of .001), 9 blocks .110 through .190 (steps of .010), 5 blocks .100 through .500 (steps of .100), 3 blocks 1.000, 2.000, 4.000.

**NO-LEDGE CRYSTAL PINK® GRANITE SURFACE PLATE** G-80601, GRADE AA

12" x 12" (300mm x 300mm) Crystal Pink® Granite Surface Plate with a 4" (100mm) thickness. Crystal Pink® Granite has the highest percentage of quartz of any granite for superb wear resistance. Grade AA (Laboratory Grade) for precision operations in constant temperature gaging rooms and metrology departments. .000050" (0.0012mm) Flatness unilateral tolerance. Produced without ledges.

**2-LEDGE CRYSTAL PINK® GRANITE SURFACE PLATE** G-80611, GRADE AA

12" x 18" (300mm x 450mm) Crystal Pink® Granite Surface Plate with a 4" (100mm) thickness. Crystal Pink® Granite has the highest percentage of quartz of any granite for superb wear resistance. Grade AA (Laboratory Grade) for precision operations in constant temperature gaging rooms and metrology departments. .000050" (0.0012mm) Flatness unilateral tolerance. Produced with two ledges.





METALWORKING  
SOLUTIONS

## PRIMALLOY BIMETAL BAND SAW BLADE

BUY NOW!

Starrett®

The Primalloy Saw is designed for heavy-duty cutting applications. The cutting performance of the high-speed steel is greatly increased through alloying with cobalt and vanadium. This increases the heat resistance as well as the wear resistance. The Primalloy Saw provides superiority in overall wear and operating life without the expense of carbide-tip solutions. With Extended Life Treatment (EXT) functionality, the Primalloy Band Saw minimizes blade replacement thus cutting costs resulting in steadier production.

Starrett® Primalloy™

## INTENS PRO MIBETAL BAND SAW BLADE

Starrett® Intenss™ PRO

Intenss PRO is a bi-metal blade ideal for intensive production cutting. Its positive rake angle and variable pitch tooth geometry provide excellent cutting efficiency. It offers easy penetration, excellent chip clearance, low noise levels, quality surface finish and faster, straighter cuts. It is a good choice for steels up to HRc 45, tool and stainless steels and nickel-based and non-ferrous alloys.

## VERSATIX MP MIBETAL BAND SAW BLADE

Starrett® Versatix™ MP

Versatix MP is a bi-metal blade of triple-tempered, high-speed M-42 cobalt steel teeth with alloy steel backing strip. It has a patented tooth design that dissipates stress during cutting for less tooth breakage and longer blade life. Its special set minimizes pinching when cutting structurals and bundles. Ideal for sawing structurals, tubes and small solids and pull-down, gravity fed machines with uncontrolled feed rates.

METALWORKING  
SOLUTIONS

## METRIC AND IMPERIAL POCKET TAPE

Produced of high impact resistant PC-ABS plastic for superior case life, these tape measures incorporate heavy overmold and improved grip. They feature wide blades for extended standout and nylon reinforced blade coating. Positive blade lock holds blade firmly in place. Black anodized steel belt clip.

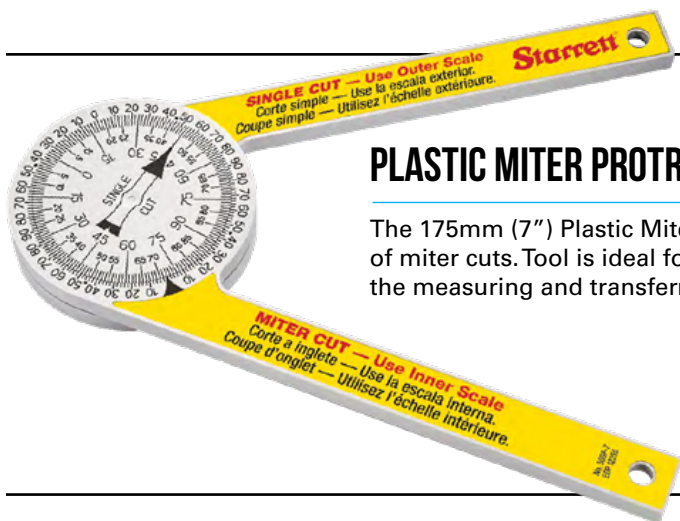
BUY NOW!

Starrett®



## HIDDEN EDGE UTILITY KNIFE S011

The Hidden Edge Utility Knife keeps the blade safely tucked away when not in use, yet instantly available by simply releasing the safety lock and squeezing the lever to the knife body. The cutting depth is easily and accurately adjusted with a thumb wheel. With a quick release, the blade changes and spares are stored in the lever. Blade changes are fast and tool-free and do not require disassembling.



## PLASTIC MITER PROTRACTOR 505P-7 175MM (7")

The 175mm (7") Plastic Miter Protractor takes error-prone calculations out of the process of miter cuts. Tool is ideal for carpenters, plumbers and all building trades that require the measuring and transferring of angles and invaluable for home use.



## ALUMINUM COMBINATION PROTRACTOR

CP505A-12 300MM (12")

The 300mm (12") Aluminium Combination Protractor is part of the popular ProSite 505 Protractor family. The 5-in-1 combination protractor performs miter cuts, single cuts, compound cut conversion table, protractor and roof pitches.



METALWORKING  
SOLUTIONS**OUTSIDE MICROMETER** T444.1XRL-1

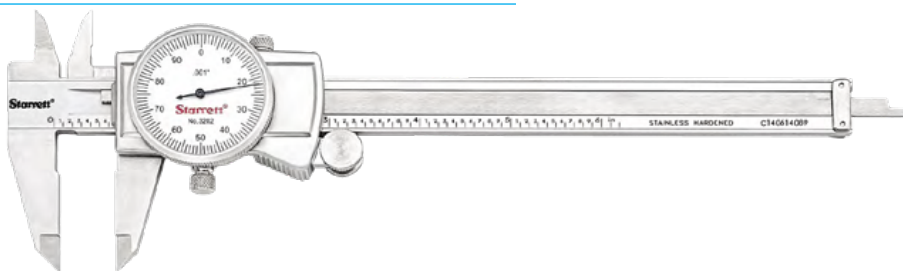
The Starrett 444.1 outside micrometer features ratchet stop, lock nut, and carbide face. .0001" grad, ratchet stop, lock nut, carbide faces. Setting standard included.

**BUY NOW!****Starrett®****1 ELECTRONIC MICROMETER WITH OUTPUT** 733.1XFL-1

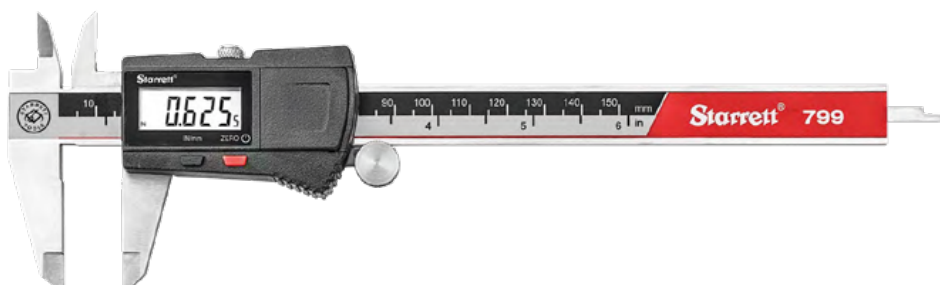
The Starrett 733.1 Electronic Micrometer with Output is a full-featured precision measuring tool built with customary Starrett quality and workmanship. It includes output capability for data transmission. The 733.1 series includes a large, easy-to-read, high-contrast LCD digital readout for clear readings. With its automatic OFF functionality, smooth friction thimble for uniform pressure, and balanced frame design, Starrett products provide comfortable and accurate measuring. Its no-glare satin chrome finish minimizes annoying surface glare under bright lights indoors. Starrett electronic micrometers guarantee a precise measurement at every position each and every time. 0-1" Range, .00005" Resolution, with case.

**HARDENED STAINLESS STEEL DIAL CALIPER** 0-6" RANGE, .001" GRADUATIONS, 3202-6

The Starrett 3202 Series dial Calipers provide quick, accurate measurements of outside dimensions, inside dimensions, and depth. The dial caliper is the most versatile precision hand tool on the market and has been the first choice of metal working professionals for decades. This series features 0-6" range and .001" graduations, in fitted case.

**ELECTRONIC CALIPER** STAINLESS STEEL, .0005" RESOLUTION, 0-6" MEASURING RANGE, EC799A-6/150

The Starrett EC799 Series Electronic Caliper is light, comfortable, easy-to-use, and constructed with features that have made Starrett slide calipers the machinist's first choice for many years. The EC799 offers a slim, streamlined profile, a large, clear easy-to-read LCD display, long battery life, and function buttons for zero and inch/mm. Electronic caliper, 0-6" (0-155mm), w/o output, with plastic case.



METALWORKING  
SOLUTIONS

## TECHNIKS CERTIFIED CNC TOOLING SOLUTIONS

BUY NOW!



### MICRON POWER MILLING DRIVE CHUCKS BY PARLEC

The unique face & taper contact between the thrust-ring nut and chuck body is the key to the Micron Milling Chucks unparalleled concentricity and rigidity; delivering higher levels of accuracy and clamping power than other mechanical chucks.

- Standard Micron Chucks balanced up to 10,000 @ G2.5
- M-style Mold Chucks balanced up to 15,000 @ G2.5
- 4x the clamping force of standard ER collet chucks
- 5 Microns at 3xD

MICRON MILLING CHUCKS SIMULFIT HOLDERS ARE OFFICIALLY LICENSED BIG-PLUS® HOLDERS.

\*BIG-PLUS® is a registered trademark of Daishowa Seiki Kabushiki Kaisha and that Daishowa Seiki Kabushiki Kaisha does not endorse or sponsor the products of Parlec.



M-style Mold Chucks for narrow mold applications.

### HSK100A HEAVY DUTY SHRINKFIT BY PARLEC

Heavy duty shrinkfit holders for the most demanding applications in the heavy machinery and aerospace industries. Thick-wall design delivers the required rigidity and clamping force for heavy chip loads and high metal removal rates.

- Coolant supplied directly to the cutting zone drastically improves tool life and chip evacuation.
- Extreme concentricity, 3 Microns.
- Balanced up to 25,000 rpm.
- Available stock in BT, CAT and HSK



Heavy duty shrinkfit with high pressure coolant ports.

#### SLIMPRO COLLET CHUCKS



BALANCED TO **25,000@G2.5**

T.I.R. 0.0001" MEASURED FROM  
TAPER TO POCKET

ULTRA SLIM NOSE DESIGN

#### SHRINKFIT TOOLS & MACHINES



BALANCED TO **25,000@G2.5**

COOLANT-THRU **3** PORT  
DESIGN

SFS MODULAR SHRINKFIT

#### HIGH PRECISION HYDRAULIC CHUCKS



BALANCED TO **25,000@G2.5**

T.I.R. 0.0001" MEASURED AT  
3X SHANK DIA.

AVAILABLE UP TO **6"** GAUGE LENGTH

#### CONNECT WITH TECHNIKS TOOL GROUP:





METALWORKING  
SOLUTIONS

BUY NOW!

NACHI



CLICK HERE FOR A QUICK VIDEO!

## AQUA EX FLAT BOTTOM DRILLS

FLAT BOTTOM DRILLING SOLUTIONS FOR A WIDE RANGE OF APPLICATIONS

- One Shot Drilling On Irregular Surfaces
- Exit Burr Reduction
- Cycle Time Savings By Eliminating Multiple Tool Processes

## AQUA EX DEEPHOLE DRILLS

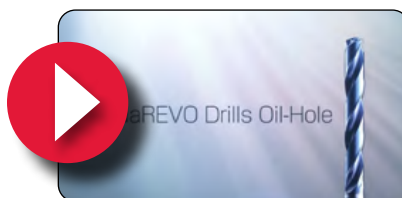
STABLE DEEP HOLE DRILLING UP TO 40XD

- Sizes Down To 1mm (0.04")
- Lengths Up To 40XD
- Coolant Thru With Optimal Flute Design For Stable Chip Evacuation

## AQUA HARD MILLS

SUPERIOR MILLS DESIGNED FOR HARDENED MATERIAL UP TO 70 HRC

- Thick Core For Rigidity
- High Helix For Great Finish
- Edge Prep For Durability And Long Tool Life



CLICK HERE FOR A QUICK VIDEO!

## AQUA REVO DRILLS

HIGH PERFORMANCE DRILLING FOR LONG TOOL LIFE AND CONSISTENCY

- Durable Cutting Edge Shape (Longer Lasting Corners)
- Work Hardening Reduction
- High Volume Coolant Flow
- Directional Coolant Channeling
- Lengths Up To 8XD

## SG POWDERED METAL DRILLS

PRECISION DRILLING FOR A WIDE RANGE OF MATERIALS

- Versatile Drilling For Job Shop Or Production Environments
- Sizes Ranging From 0.5mm to 32mm
- Self Centering
- Precision Ground Shanks For High Accuracy

## ALH MILLS

GREAT SOLUTION FOR NON-FERROUS MACHINING

- Deep Chip Pockets For Evacuation
- Achieve Great Finish
- Polished Surfaces For Reduced Adhesion



CLICK HERE FOR A QUICK VIDEO!

## AQUA REVO MICRO DRILLS

HIGH ACCURACY DRILLING OF SMALL DIAMETER HOLES

- New Material Improvements To Increase Deflective Strength
- Self Centering Capabilities Up To 10XD Lengths
- Web Optimization For Torsional Strength
- 5XD and 10XD Lengths Down To 0.5mm

## AQUA V MILLS

STABLE MILLING WITH LONG LIFE FOR VARIOUS MATERIALS

- 4 and 5 Flute Options
- Variable Helix and Index For Reduced Chatter
- Nano AlTiN Coating For High Wear Resistance

## SG TAPS

GREAT VERSATILE TAP FOR VARIOUS MATERIALS

- Premium Substrate For Wear Resistance And Heat Reduction
- Multilayer Coating For Added Longevity
- Stable Chip Evacuation

METALWORKING  
SOLUTIONS

## TOTAL TOOLING SOLUTIONS

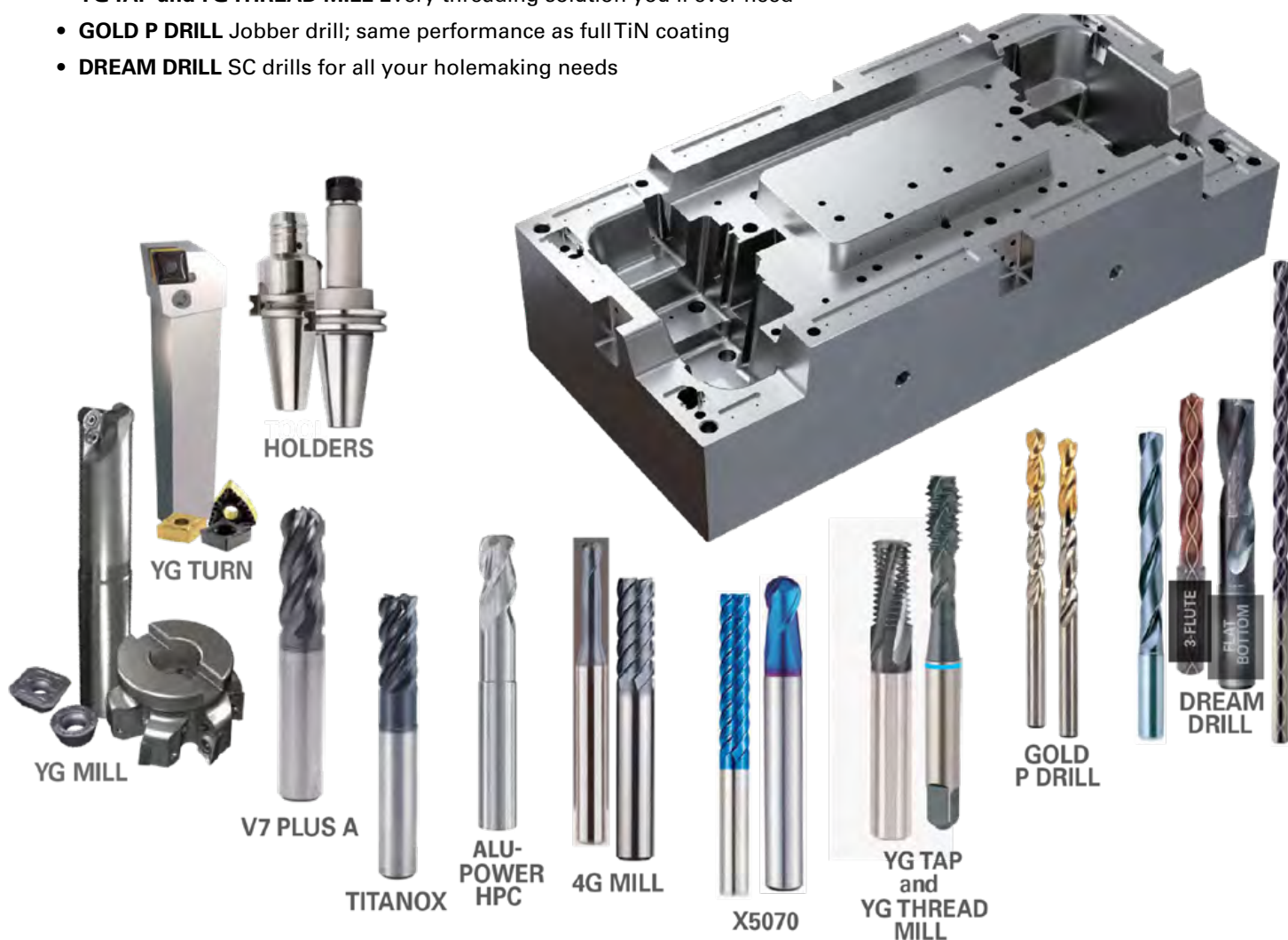
CUTTING TOOLS THAT PAY YOU BACK

The most complete line of tools working harder, lasting longer — that's YG-1

- **TOOL HOLDERS** Support the high-performance product line-up
- **YG TURN** Cutting-edge designs to optimize turning
- **YG MILL** Solutions in indexable milling
- **V7 PLUS A** SC end mill; heavy roughing, finishing and pocketing
- **TITANOX** Double core performance for titanium and stainless steels
- **ALU-POWER HPC** Heavy roughing, maximum metal removal, longer life in aluminum
- **4G MILL** SC end mill; die/mold detailing work up to 50HRc
- **X5070** SC end mill; high hard milling up to 70Rc
- **YG TAP and YG THREAD MILL** Every threading solution you'll ever need
- **GOLD P DRILL** Jobber drill; same performance as full TiN coating
- **DREAM DRILL** SC drills for all your holemaking needs

BUY NOW!

YG





METALWORKING  
SOLUTIONS



.045"  
CUTTING  
WHEEL  
COMPARISON



CLICK HERE FOR A .045" CUTTING  
WHEEL COMPARISON VIDEO!

BUY NOW!

UNITED  
ABRASIVES  
SAIT

## A60S .045" CUT-OFF WHEEL – GENERAL PURPOSE

- Special aluminum oxide grain
- Extremely fast burr-free cutting with long life
- Exceptional performance on METAL

23101	4-1/2" x .045" x 7/8"	Type 1/41
23106	6" x .045" x 7/8"	Type 1/41
22021	4-1/2" x .045" x 7/8"	Type 27/42
22047	6" x .045" x 7/8"	Type 27/42



## SAITECH™ .045" CUT-OFF WHEEL – HIGH PERFORMANCE

- High performance, ceramic aluminum oxide grain
- Uniform, high density grain structure is extremely durable and self-sharpening
- Fast cutting with extremely long life on STAINLESS and METAL

23174	4-1/2" x .045" x 7/8"	Type 1/41
23182	6" x .045" x 7/8"	Type 1/41
22072	4-1/2" x .045" x 7/8"	Type 27/42
22082	6" x .045" x 7/8"	Type 27/42



## THE ULTIMATE CUT™

.045" CUT-OFF WHEEL – PREMIUM PERFORMANCE

- Best in class for cutting a wide range of STAINLESS thin and thick gauge, flat stock, bar stock, square tubing, etc.
- Exceptional cutting performance on METAL and ALUMINUM

22230	4-1/2" x .045" x 7/8"	Type 1/41
22240	6" x .045" x 7/8"	Type 1/41
22380	4-1/2" x .045" x 7/8"	Type 27/42
22390	6" x .045" x 7/8"	Type 27/42





METALWORKING  
SOLUTIONS

**CLICK HERE FOR A .25" GRINDING  
WHEEL COMPARISON VIDEO!**

**BUY NOW!**

**UNITED  
ABRASIVES**  
*SAIT*

## A24N 1/4" GRINDING WHEEL – FAST GRINDING

- Aluminum oxide grain
- Soft bond for fast stock removal on METAL and STAINLESS

20060	4-1/2" x 1/4" x 7/8"	Type 27
20160	4-1/2" x 1/4" x 5/8-11	Type 27



## A24R 1/4" GRINDING WHEEL – LONG LIFE

- Aluminum oxide grain – our most popular wheel
- For general purpose grinding
- Longer life for fewer wheel changes
- For use on METAL

20063	4-1/2" x 1/4" x 7/8"	Type 27
20163	4-1/2" x 1/4" x 5/8-11	Type 27



## SAITECH ULTIMATE PERFORMANCE™ 1/4" GRINDING WHEEL – PREMIUM PERFORMANCE

- Hard bond for long life grinding with fast stock removal
- High performance, ceramic aluminum oxide grain, is designed to outlast standard aluminum oxide wheels
- Very uniform, high density grain structure for long life and cooler cut on STAINLESS and METAL

20064	4-1/2" x 1/4" x 7/8"	Type 27
20164	4-1/2" x 1/4" x 5/8-11	Type 27





METALWORKING  
SOLUTIONS



**CLICK HERE FOR A FLAP DISC  
COMPARISON VIDEO!**

**BUY NOW!**

**UNITED  
ABRASIVES**  
*SAIT*

## OVATION®

FLAP DISC – HIGH DENSITY FIBERGLASS BACKING

- Heavy-duty zirconium grain, designed for high pressure applications
- Durable polyester backing for reduced edge wear and long life
- 40% more material than conventional, regular density flap discs
- For use on METAL and STAINLESS

78005	4-1/2" x 7/8" x 36 grit	Type 27
78006	4-1/2" x 7/8" x 40 grit	Type 27
78008	4-1/2" x 7/8" x 60 grit	Type 27
78009	4-1/2" x 7/8" x 80 grit	Type 27
78011	4-1/2" x 7/8" x 120 grit	Type 27
78105	4-1/2" x 5/8-11 x 36 grit	Type 27
78106	4-1/2" x 5/8-11 x 40 grit	Type 27
78108	4-1/2" x 5/8-11 x 60 grit	Type 27
78109	4-1/2" x 5/8-11 x 80 grit	Type 27
78111	4-1/2" x 5/8-11 x 120 grit	Type 27



**UNITED  
ABRASIVES**  
*SAIT*

**WHEN QUALITY COUNTS**

AMERICAN MADE



INDUSTRIAL GRADE





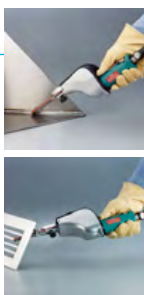
**METALWORKING  
SOLUTIONS**



## DYNAFILE ABRASIVE BELT TOOL

MODEL NUMBER 14000

- .5 hp
- Straight-Line
- 20,000 RPM
- Front Exhaust
- For 1/8"-1/2" W x 24" L (3-13 mm x 610 mm) belts



Dynafile® Abrasive Belt Tool



**CLICK HERE FOR  
A QUICK VIDEO!**

**BUY NOW!**



## DYNAFILE II ABRASIVE BELT TOOL

MODEL NUMBER 40320

- .5 hp
- 7 Degree Offset
- 20,000 RPM
- Front Exhaust
- For 1/4"-3/4" W x 18" L (6-19 mm x 457 mm) belts



## MINI-DYNAFILE II ABRASIVE BELT TOOL

MODEL NUMBER 15003

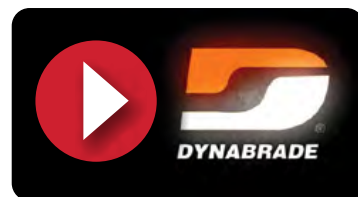
- .4 hp
- 7 Degree Offset
- 25,000 RPM
- Rear Exhaust
- For 1/8"-1/2" W x 12" L (3-13 mm x 305 mm) belts



## 5" (127 MM) DIA. NON-VACUUM DYNORBITAL EXTREME RANDOM ORBITAL SANDER

MODEL NUMBER X51

- 0.3 hp
- 12,000 RPM
- 3/16" (5 mm) Dia. Orbit
- Rear Exhaust
- PSA



**CLICK HERE FOR A QUICK VIDEO!**





# SAFETY SOLUTIONS: PERSONAL PROTECTION EQUIPMENT & SERVICES

CLICK HERE TO VISIT THE SAFETY SOLUTIONS PAGE ON OUR WEBSITE!

## SERVICE, TRAINING AND PRODUCTS

### Customized Approach

A&M Safety Specialist team takes a consultative approach to help you better protect your workforce and create a safety conscious work environment. With over 50+ years in the safety industry, our QSSP Certified Safety Specialists partner with you to identify service, training and product solutions to keep you and your employees safe and in compliance with OSHA and all regulatory standards. Partnering with manufacturers who take pride in bringing innovative, best in the business safety solutions is key to our product line and recommendations. Performing safety audits, inspections and evaluations ensure that A&M can provide detailed reports that recommend the correct products, services and repairs to meet your safety requirements. Safety Specialists work with your team to design a program to help you avoid the most common OSHA violations.

### Top 10 OSHA Violations:



- Fall Protection – General
- Lockout/Tagout
- Fall Protection – Training
- Ladders
- Hazard Communications
- Powered Industrial Trucks
- Scaffolding
- Machine Guarding
- Respiratory Protection
- Eye and Face Protection

### Safety Trainings

A&M believes continuing education is the foundation of our safety culture. The Safety Team and manufacturing partners collaborate to regularly conduct safety trainings at your worksite, in classrooms or at the manufacturers facility. We coordinate interactive events that feature educational classes focused on critical industry topics, while you learn specifics about demonstrated products that are available to hold and use.

WE are MSA R.I.T.E. and C.A.R.E. certified.

## REDEFINING SAFETY SERVICE

A&M Safety Services offers convenient on-site and in-house repair, product sales, training, rentals and service for fall protection, gas detection, supplied air, and SCBA's (Self-Contained Breathing Apparatus.) As a MSA Authorized Service Center we help ensure your safety as we provide certified technicians for portable gas detection and breathing apparatus.

### Compliance Services: Inspections and Testing

Our on-site and in-house inspections & flow tests are performed using the Posi-Chek® dynamic test device. This verifies that a breathing apparatus operates within current NIOSH standards. Air cascade delivery systems are available in various configurations. All units are supported by inspection, calibration and test result documentation. Six-cylinder pod units are delivered with our knuckle boom crane truck. Respirator Fit Tests use the OSHA accepted, NFPA compliant OHD® Quantit® system. The controlled negative pressure technology provides the highest reliability and fastest results with a quantitative record.

### Consultative Safety Evaluation

A&M provides comprehensive safety programs for Training, Inspections and Audits:

Electrical Safety	Slips, Trips and Falls	Health, Hygiene & PPE	Employee Field Safety
Arc Flash	Fall Arrest	Ergonomics	Confined Space
Lock/Tag Out Control Hazardous Energy	Lock/Tag Out Control	Eye Protection/ Eye Wash Stations	Respiratory Protection & Fit Testing, Mask Repair
Signage & Identification	Matting	Clothing (Fire Retardant, Arc Flash, etc.)	SCBA Inspection/ Repair
Thermal Imaging	Sling & Hoist	Hand Protection/ Hygiene	Traffic Control
	Sorbents	First Aid	Gas Detection/ Calibration & Repair
		Hearing Conservation	Flammable Storage

Click on the logo to go to that manufacturer's section.



SAFETY  
SOLUTIONS**HYFLEX 11-819 ESD**

DURABLE, TOUCHSCREEN-COMPATIBLE GLOVES  
THAT GUARD AGAINST ELECTROSTATIC DISCHARGE

- ESD functionality: Protecting products from electrostatic discharge
- Ultra-thin nitrile foam coating: Touchscreen-compatible tactility
- FORTIX™ Abrasion Resistance: 2x more grip, up to 20% more durability
- ZONZ™ Comfort Fit knitwork reduces strain in stress-prone areas

**BUY NOW!****Ansell****HYFLEX 11-561** THE THINNEST, LIGHTEST EN ISO C/ANSI A3-  
LEVEL INDUSTRIAL GLOVES, OFFERING 100% GREATER DURABILITY

- FORTIX™ Abrasion Resistance: EN and ANSI level 4 abrasion resistance
- INTERCEPT™ Cut Resistance: Better hand protection and workplace safety
- Palm-dipped coating: For breathable PPE gloves with superior grip  
\*when compared with nearest market competitors
- The 11-561's palm-dipped coating improves grip, while a reinforced thumb crotch defends against rapid wear
- Dermatest® and Oeko-Tex® certification ensures these PPE gloves are skin-friendly and free of harmful substances

**HYFLEX 11-755** ULTRALIGHT ANSI A5/EN ISO E-LEVEL  
CUT-RESISTANT GLOVES WITH TOUCHSCREEN

- ANSI A5/EN ISO E cut protection: 4x greater cut resistance\*
- Ultralight formulation: All-day comfort and dexterity ensured
- Touchscreen-compatible design: Improved productivity and safety  
\*versus standard ANSI A2/EN ISO B-rated gloves

**HyFlex®**  
#madewithHyFlex**CLICK HERE FOR A QUICK VIDEO!****HYFLEX 11-542** HEIGHTENED PROTECTION: INTERCEPT™ CUT RESISTANCE TECHNOLOGY ENSURES  
THESE NITRILE GLOVES SATISFY EN ISO F/ANSI A7 CUT PROTECTION  
STANDARDS, PREVENTING WORKPLACE INJURIES

- INTERCEPT™ Cut Resistance: EN ISO F/ANSI A7 hand protection
- EN 407 contact heat level 1 resistance: Protects up to 100°C/212°F
- ZONZ™ Comfort Fit: Tailored fit, for dexterous comfort

**Ansell****CLICK HERE FOR A QUICK VIDEO!**

SAFETY  
SOLUTIONS

**CLICK HERE FOR A QUICK VIDEO  
ON RINGERS GLOVES!**

**BUY NOW!****Ansell**

### **RINGERS R-167** TOUCHSCREEN-COMPATIBLE IMPACT AND CUT PROTECTION GLOVES, FOR HAND SAFETY AND EASE OF USE

- Patented TPR design: Top-of-hand and finger-length impact protection
- Durable synthetic leather palm: Enhanced grip and abrasion resistance
- Touchscreen-compatible design: Fewer glove removals, greater safety



### **RINGERS R-169** TOUCHSCREEN-COMPATIBLE IMPACT AND CUT PROTECTION GLOVES, FOR HAND SAFETY AND EASE OF USE

- Optimized TPR design: Top-of-hand, knuckle and finger protection
- Hook and loop pull tab closure: For impact gloves with a secure cuff
- EN- and ANSI/ISEA-certified cut resistance: For effective defenses



### **RINGERS R-065**

CUT-RESISTANT IMPACT GLOVES, WITH A TPR DESIGN AND KNIT SHELL FOR DEXTEROUS COMFORT

- Breathable knit shell: Cut resistance, dexterity and comfort
- TPR material: For protective gloves that ensure impact protection
- Touchscreen compatibility: Enhanced safety and usability

### **RINGERS R-297** HEAVY-DUTY IMPACT PROTECTION GLOVES, ENSURING HAND SAFETY WITH ADDED CUT RESISTANCE

- Patented TPR design: For excellent impact protection
- Padded palm with Kevlar® liner: For durable, cut-resistant gloves
- Durable grip system on palm and fingers: Enhanced grip performance





SAFETY  
SOLUTIONS

## ALPHATEC 68-2000

SUPERIOR, BREATHABLE  
MICROPOROUS LAMINATE PROTECTIVE SUIT, PERFECTED  
FOR INDUSTRIAL APPLICATIONS

- Protective barrier: Low-concentration liquid chemicals, liquid and particulate biological hazards
- Microporous laminate fabric: Reduced risk of heat stress for wearers
- EN 14126 and ASTM F1670/1671 certification: Bloodborne pathogen resistance



BUY NOW!

Ansell

## ALPHATEC 68-2300

MICROGARD® 2300 FABRIC PROVIDES AN EXCELLENT BARRIER TO MANY HARMFUL CHEMICALS

- A good protective barrier to numerous inorganic liquid chemicals including acids and bases
- Lightweight, yet relatively strong and durable
- Designed to protect, typical coverall features include respirator fit hood and a zip flap with self-adhesive tape closure
- Highly visible bright yellow for improved worker safety
- Anti-static, tested according to EN 1149-5



## ALPHATEC 68-3000

DURABLE, COMFORTABLE MULTI-LAYER CHEMICAL BARRIER, TYPE 3/4/5 PROTECTION

- Multi-layer barrier fabric provides effective protection against numerous chemicals
- Designed to protect, typical innovative features include dual zip systems and double cuffs
- Lightweight and durable
- Highly visible bright yellow color for improved worker safety
- Anti-static, tested according to EN 1149-5 and AATCC 76



## ALPHATEC 4000

UNIQUE MULTI-LAYER BARRIER FABRIC RENOWNED FOR ITS LIGHTWEIGHT, YET ROBUST TEXTILE FEEL  
AND EXCEPTIONAL BARRIER TO ORGANIC & INORGANIC CHEMICALS

- Exceptional protection, over 200 chemicals permeation tested, including chemical warfare agents
- Designed to protect, typical innovative features include dual zip systems and double cuffs
- Welded and taped seams, our highest barrier to liquids and particulates
- Enhanced comfort, knitted inner cuffs and inner textile type fabric improves wearer acceptance
- Anti-static, tested according to EN 1149-5



SAFETY  
SOLUTIONS

## Ansell**GUARDIAN**<sup>®</sup>

### Tailor-made solutions for Ansell customers

Performed by our safety experts, Ansell**GUARDIAN**<sup>®</sup> is a complimentary service that helps your company **optimize safety, productivity, and total cost of ownership**. Our 45 years of safety experience, incorporating a data-driven methodology, delivers a tailor-made PPE workplace JSA assessment for site-wide or specific applications in support of your operation.

Ansell <b>GUARDIAN</b> <sup>®</sup> Assessment Benefits	Sponsors & Participants
Mitigate workplace hazards and injuries	Customer: EHS, Procurement, Ownership
Validated hand and body safety solutions	Distributor: Customer's PPE supplier
Application standardization and SKU reduction	Ansell: Inside Sales and Local Territory Manager

## WHAT WE DO

### Safety & Compliance

We provide a personalized risk management solution that improves worker safety, increases regulatory compliance, and optimizes injury reduction.

### Cost Performance

We advise on business performance improvements that result in a reduction of overall cost of ownership.

### Productivity

We deliver best-practice recommendations to optimize employee performance while increasing your company's output.

## HOW WE DO IT

Data  
Collection

Assessment

Validation  
Testing

Implementation



Training



Expansion

CONTACT US FOR A  
SITE ASSESSMENT

Ansell

reduce  
injuries by **65%****25%** complexity  
reduction

projected savings on PPE

**\$170m**

# SAFETY.

## tailor-made

### Tailor-made

Every customer is unique and so are their safety needs. It's why our field experts observe each application, using data provided and a proven process. This results in a customized, tailor-made assessment that will achieve your objectives.

### Sustainable Partnership

We start our partnership by analyzing, implementing, and improving your PPE-related operations and performance. We determine your current and future safety needs, one assessment at a time.

### Result Oriented

Our simple and clear process focuses on the most relevant areas to deliver the appropriate safety solution.



Ansell

CLICK HERE FOR A QUICK VIDEO!

SAFETY  
SOLUTIONS

## BRADY SAFETY LOCKOUT TAGOUT SERVICES

LOCKOUT IS MORE THAN JUST MEETING COMPLIANCE

### Brady products complete your lockout tagout program

Brady offers **LINK360® software** and products to create and maintain an effective safety program. With LINK360® software, you can easily create and maintain visual lockout procedures, as well as reports and audits.

With a continually changing workforce, and frequent enhancements to processes and technology, there is a need in the industry to efficiently develop and train new workers to keep operations running smoothly. Having a sustainable lockout tagout program in place allows you to bridge the knowledge gap and improve safety throughout your facility.

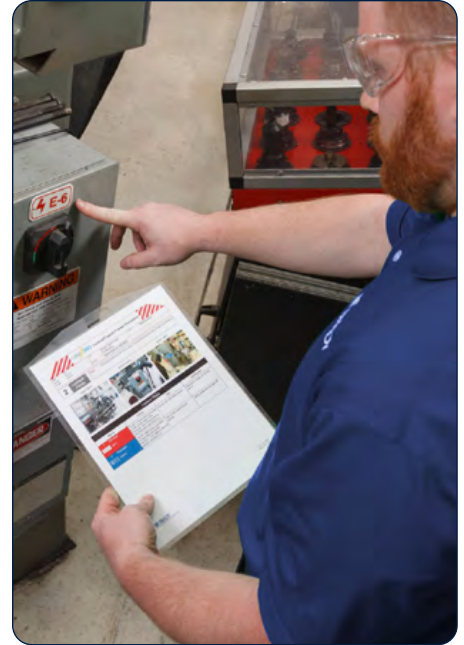
### Rely on our team of experts to deliver:

- **Machine inventories** with a full list of equipment that requires a procedure and number of isolation points
- **Complete visual lockout tagout procedures**, including authoring and installing procedures, and tagging all energy isolation points
- **Procedure audits** to comply with OSHA's periodic inspection requirement
- **Training** that includes options for general/affected, authorized employee and train the trainer
- **Program development** support to assess your current state and provide a program implementation guide
- Additional lockout services, including alternative method procedures/minor servicing, job safety analysis, gap analysis, and time- and material-based services



**BUY NOW!**

**BRADY**  
WHEN PERFORMANCE MATTERS MOST™



## LINK360® CREATE YOUR OWN PROCEDURES

Brady's **LINK360®** cloud based software offers procedure creation, procedure maintenance, audit reminders and more in order to manage, store and sustain machine safety and procedural information. It includes three centers that address common areas of focus when operating your equipment safely: Lockout Tagout, Confined Space and Reliability/Maintenance.

### With LINK360® software, you can:

- Create and update procedures and permits
- Facilitate reviews, comments and approvals
- Setup regularly scheduled audit processes and reminders
- Time-stamping and record keeping
- Print lockout tags containing equipment-specific information

### The LINK360® advantage:

- Cloud-based software allows for program scalability and access from mobile and tablet devices
- User-defined permission for viewing, editing and approving helps ensure the correct people are doing the correct activities
- Pre-defined templates and standardized procedures for multi-site standardization
- Workflow and responsibility assignments for sites, areas and equipment improves employee accountability around machine safety and productivity
- Audit alerts, notification and detailed reporting help companies keep information up-to-date





SAFETY  
SOLUTIONS

## BRADY SAFETY ARC FLASH SERVICES

PROTECT YOUR EMPLOYEES FROM THE DANGERS OF ARC FLASH

When arc flash safety is your priority

Creating a world-class arc flash program in-house requires time, engineered resources and power system analysis software to accurately calculate arc flash risk beyond general scenarios. Our electrical engineers work with you to create an arc flash solution that meets your needs, and keeps you compliant.

Brady Safety Services can help:

- **Review your current program** and any past assessments, and then identify any safety issues or needed compliance improvements
- **Perform risk assessments** to compile data for arc flash calculations, create a single-line diagram and report, and then install the needed labels
- **Offer training options** including refresher, qualified persons and train-the-trainer sessions

### NEW! Infrared Thermography Service

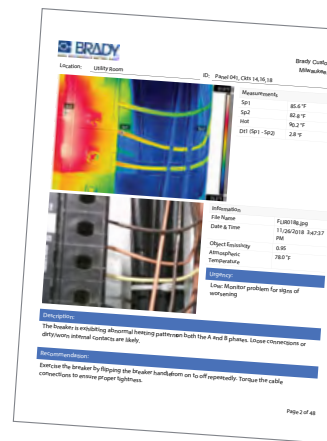
Brady can conduct infrared inspections, or include them with an Arc Flash Risk Assessment. Our certified infrared thermographers use a specialized infrared camera to detect any hot spots that may need attention in your equipment. They provide:

- A comprehensive report, either Standard (only hot spots provided) or Expanded (all pictures included in report)
- Recommendations for improvements and/or repairs for each identified hot spot
- Imaging of your electrical distribution system components



**BUY NOW!**

**BRADY**  
WHEN PERFORMANCE MATTERS MOST™



## BRADY SAFETY CONFINED SPACE SERVICES

ENSURE EACH EMPLOYEE ENTERING A CONFINED SPACE RETURNS SAFE

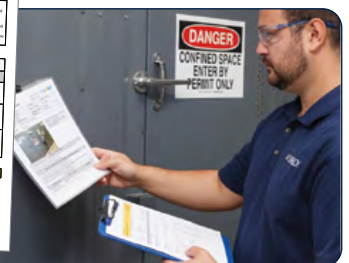
To align with OSHA requirements, employers must evaluate and identify permit-required confined spaces, as well as develop procedures for entry and training. Common confined spaces include elevators and storage tanks. Find out how Brady can support your confined space program.

Our experts will come on-site to:

- **Take inventory**, collect data and classify each space as permit or non-permit required
- **Perform hazard assessments** to evaluate specific hazards, methods of protection and verification, label needs, worker classification, PPE requirements and more
- **Conduct training** focused on best practices, client-specific program elements, an overview of the 1910.146 OSHA regulation and more

### What's our process?

A Brady safety professional will come on-site and collaborate with your subject matter expert to identify spaces and their hazards. We then continue to build your inventory, including classifying your confined spaces as permit or non-permit required. All permit-required confined spaces will be further defined by their hazards, such as engulfment or atmospheric hazards, in a permit-required confined space hazard analysis.



SAFETY  
SOLUTIONS

## NEW! SAFEKEY LOCKS

YOU'VE GOT LOCKOUT QUESTIONS, WE'VE GOT ANSWERS

### LOCKOUT IS MORE THAN JUST MEETING COMPLIANCE.

With this innovatively designed padlock, you get up to 700% more unique key possibilities than a standard safety padlock, without sacrificing a secure lockout. It's all in the forward-thinking design of the locking mechanism and unique key blade that gives you more precision and control in your lockout program. With that level of precision, you're covered from your simple to highly complex lockout needs. You also get:

- Fast identification with the color-matched key
- Excellent durability in industrial environments
- Years of use with the low-friction locking mechanism that helps maintain key integrity
- Easy operation with extra smooth key insertion and removal — even when wearing gloves!

**BUY NOW!**

**BRADY**  
WHEN PERFORMANCE MATTERS MOST™



## SLIMVIEW™ GROUP LOCK BOX PART 150505

Good things come in small packages. The SlimView Group Lock Box reduces the space you need for group lockout or box storage. An innovative recessed door allows padlocks to hang straight, meaning space-saving efficiency for you.

- Rugged steel body and polycarbonate door stand up to all of your toughest jobs
- Clear door gives you clear view into everything you need during your group lockout
- Convenient storage with built-in padlock and key hangers
- Room for a dozen—storage space for up to 12 padlocks
- Easy to wall mount with button mount holes



## ULTRA COMPACT LOCK BOX PART 14917

The Ultra-Compact Group Lock Box is ideal for group lockout situations with multiple isolation points and employees performing maintenance activities on industrial equipment.

- Compact size so it easily fits into a toolbox, bag, or the palm of your hand
- Wall mountable and detachable for ultimate portability
- Hinged transparent cover for easy viewing of contents inside
- Capacity for up to 12 workers to attach their products
- Fits SafeKey Lockout Padlock keys



## RIPTAG™ PART 150502

Take it with you! RipTag™ Safety Tag Roll is your complete and convenient take-it-with-you system for tagging hazardous areas in your facility. Make safety more simple with this easy-to-dispense solution.

- All-in-one portable bulk roll of tags to tear off as you need to, and cable ties for quick attachment
- Strong stuff—exceeds OSHA's 50 lbs. pull force tagout regulation
- Pick your quantity. Choose from 100 or 250 tags per roll
- Long-lasting identification system that's easy to store



SAFETY  
SOLUTIONS

## BBP®37 COLOR AND CUT SIGN AND LABEL PRINTER PART BBP37

The BBP®37 Industrial Printer combines multi-color and die-cut printing technology so you can take sign and label customization to the next level.

Color your way to an improved workplace with the BBP®37 Sign and Label Printer. With multi-color print and shape cutting capabilities, this printer creates impactful identification that fits your application and workspace needs.

- Multicolor print capabilities make it ideal for creating impactful safety signs, lockout tags, warning labels and more in a single pass
- Built in XY-cutter allows for the creation of die-cut shapes and text that gives the flexibility to choose where to place new messaging
- Easily import and export printer your generated label files, lists and graphics through the USB 2.0 port and a USB flash drive
- Fast print speeds up to 5 inches per second
- Prints on a variety of material options so you can create signs and labels for a variety of applications
- Setup is stress free – Contact our Brady Technical Support Team and we will schedule a free phone setup appointment
- Includes Brady Workstation Safety and Facility ID Software Suite (BWS-SFIDS-NA-EM) to make label creation even easier


**BUY NOW!**
**BRADY**  
WHEN PERFORMANCE MATTERS MOST™

## S3100 SIGN AND LABEL PRINTER PART S3100-W

The easy-to-use BradyPrinter S3100 sign and label printer is designed to meet a variety of your facility identification needs, helping you save time so you can get back to work.

- Create the labels you need, when you need them without the wait with do-it-yourself label creation
- Ideal for multi-user areas in your facility, anyone can simply walk up, create labels and print right on the spot
- Wi-Fi connectivity allows you to get data more easily from a variety of sources
- Label creation is even faster with the quick setup and print speeds that come with print smart technology from Brady
- Setup is stress free – Contact our Brady Technical Support Team and we will schedule a free phone setup appointment
- Includes Brady Workstation Safety and Facility ID Software Suite (BWS-SFIDS-NA-EM) to make label creation even easier



## BBP®85 INDUSTRIAL SIGN AND LABEL PRINTER PART BBP85

The BBP®85 Label Printer allows you to create BIG and BOLD labels up to 10 in. wide in multiple colors with an easy-to-use interface that anyone on your team can use.

- The BBP®85 Label Printer creates unmistakably large visuals up to 10 in. wide
- Simple touch-screen interface for stand-alone use, or print from your PC with Brady Workstation
- Timesaving label design apps to create pipe markers, safety signs, arc flash, GHS labels and more
- Print multi-colored signs and labels that are more noticeable, more memorable and more effective
- Setup is stress free – Contact our Brady Technical Support Team and we will schedule a free phone setup appointment
- Includes Brady Workstation Safety and Facility ID Software Suite (BWS-SFIDS-NA-EM) to make label creation even easier





SAFETY  
SOLUTIONS

## M211 PORTABLE BLUETOOTH LABEL PRINTER PART M211

Design, preview, and print all from your phone. This tough, compact labeler belongs on any jobsite.

- Preview and print labels from our industry-leading Express Labels Mobile app for iOS and Android
- Maximize on-site efficiency – import data, save, and share files with ease
- Print over 300 labels on a single charge using advanced Lithium Ion battery technology
- Resists 6-foot drops, 250-lb crushes and military-grade shocks
- Compact and lightweight design (1.2 lbs.)

**BUY NOW!**

**BRADY**  
WHEN PERFORMANCE MATTERS MOST™



## M210 HANDHELD LABEL MAKER PART M210

Designed for the toolbox. Ready for any jobsite.

- Drop in a cartridge, type, and print • Create and print using a simple and intuitive keyboard
- Get fast and accurate labels on-site using auto-formatting with 11 pre-loaded application design guides
- Design custom labels you need for any application – including text and UPC, DataMatrix and QR Codes
- Conveniently store up to 12 label files up to 2MB

## J2000 PRINTER PART J2000-BWSSFID

Harness the power of color. Pair the BradyJet J2000 Color Label Printer with Brady Workstation Safety and Facility Identification Software and let color drive a safer and more efficient workplace.

- On-demand, mid-volume inkjet solution creates photo-quality color labels in a single pass
- More color options than you'd ever need—16 million—for the most impactful identification
- Compact design means performance printing in the tightest spaces
- Custom identification without the high cost of outsourced printing
- Includes Brady Workstation Safety and Facility Identification Software provides the custom labels your facility needs
- Setup is stress free – Contact our Brady Technical Support Team and we will schedule a free phone setup appointment

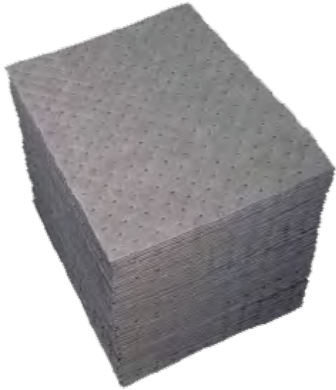


## ABSORBENT ROLL PART ENV150

Made of highly economical, contractor-grade, single-ply, meltblown polypropylene for oil clean-up on land and water.

- White absorbents pick up petroleum-based fluids, paints and non-water-soluble chemicals while repelling water
- Great for indoor and outdoor use
- Medium weight – optimal for most general maintenance needs
- ENV® absorbents are made with MAXX® Technology for superior absorbency and greater strength without added weight
- Non-perforated absorbents offer the greatest absorbency and better tear resistance in high traffic areas



SAFETY  
SOLUTIONS

## XTRA TOUGH ABSORBENT PAD PART UXT100

Features laminated coverstock – ideal for applications requiring a durable, non-linting and abrasion-resistant absorbent.

- Highly versatile, grey absorbents pick up water-based, petroleum-based and non-aggressive, chemical fluids
- Heavy weight – specifically designed for continuous leaks and larger spills so you use less material
- UXT XtraTough absorbents are made to handle virtually any liquid and have the extra strength required to allow for wringing and re-use
- Perforations provide cost control and reduce waste by allowing you to use only what you need

**BUY NOW!**
**BRADY**  
WHEN PERFORMANCE MATTERS MOST™


## NYLON SAFETY LOCKOUT PADLOCK – KEYED DIFFERENT, RED, STEEL SHACKLE

PART SDPL-RED-38ST-KD

Help ensure workers stay safe from hazardous energy during servicing and repair with strong, efficient and cost-effective Safety Lockout Padlocks from Brady.

- Designed exclusively for lockout/tagout applications as part of an OSHA-compliant safety program
- Key-retaining brass cylinder prevents key removal in the unlocked position for added safety and helps limit lost keys
- Nylon padlocks with steel shackles are lightweight, durable and ideal for general lockout applications
- Locks that are Keyed Different (KD) are ideal for simple lockout applications and a manageable number of energy isolation points
- Record and retain engraved key codes to streamline replacement of lost keys

## SOLID COLORED TOUGHSTRIPE® TAPE PART 104342

Extremely durable floor marking tapes are made of rugged polyester with ultra-aggressive adhesive and hold up against forklift traffic.

- Ideal for marking aisles, passageways and storage locations and identifying equipment and egress paths
- Visible floor-marking improves safety and organization in almost any industrial environment
- High-gloss surface shines like new paint and withstands forklift traffic without tearing or lifting
- Can be easily applied by one person working alone



## LINK360® SAFETY SOFTWARE

Cloud-based software gives you a complete view of the creation, use and updates to procedures found on and around equipment and machines.

- User-friendly and easy to use
- Document management and workflow automation for your safety program
- Create visual lockout procedures to clearly communicate hazards and steps necessary to control hazardous energy
- Mark energy isolation points
- Conduct periodic inspections


**LINK360®**  
SAFETY SOFTWARE

SAFETY  
SOLUTIONS**BUY NOW!**

## PROSHIELD® 50 COVERALL

THE HIGH-PERFORMANCE, AFFORDABLE PROTECTIVE GARMENT

DuPont™ ProShield® 50 is one of the most economical protective garments available today, with similar performance to many higher priced alternatives. Made from microporous film, ProShield® 50 garments help protect workers who face on-the-job exposure to a range of non-hazardous aerosols, light liquid splash and dry particles.

### DUPONT PERFORMANCE AT AN ECONOMICAL PRICE

- **PROTECTION:** Provides a barrier against a range of non-hazardous aerosols, light liquid splash and dry particles.
- **COMFORT:** Lighter weight and roomy design make for greater comfort and mobility.
- **FEATURES:** Zipper front, elastic wrist and ankle, hood and boot options available.

Style	Color	Sizes	Description
NB120	White	SM-6X	Zipper front
NB122	White	SM-6X	Zipper front, hood, boots, elastic wrist & ankle
NB125	White	SM-6X	Zipper front, elastic wrist & ankle
NB127	White	SM-6X	Zipper front, hood, elastic wrist & ankle



**NB120S WH**

**Collar. Open Wrists and Ankles. Serged Seams. White.**

SKUs:

NB120SWHLG002500  
NB120SWHXL002500  
NB120SWH2X002500  
NB120SWH3X002500  
NB120SWH4X002500  
NB120SWH5X002500  
NB120SWH6X002500



**NB122S WH**

**Standard Fit Hood. Elastic Wrists. Attached Skid-Resistant Boots. Serged Seams. White.**

SKUs:

NB122SWHLG002500  
NB122SWHXL002500  
NB122SWH2X002500  
NB122SWH3X002500  
NB122SWH4X002500  
NB122SWH5X002500  
NB122SWH6X002500



**NB125S WH**

**Respirator Fit Hood. Elastic Wrists and Ankles. Storm Flap. Serged Seams. White.**

SKUs:

NB125SWHLG002500  
NB125SWHXL002500  
NB125SWH2X002500  
NB125SWH3X002500  
NB125SWH4X002500  
NB125SWH5X002500



**NB127S WH**

**Standard Fit Hood. Elastic Wrists. Attached Skid-Resistant Boots. Serged Seams. White.**

SKUs:

NB127SWHLG002500  
NB127SWHXL002500  
NB127SWH2X002500  
NB127SWH3X002500  
NB127SWH4X002500  
NB127SWH5X002500  
NB127SWH6X002500



SAFETY  
SOLUTIONS

## TYVEK® 400 COVERALLS PROTECTION THAT WORKS AS HARD AS YOU DO

All suits may look the same, but only Tyvek® stands out where you need it most—on the job

The lightweight, durable protection of Tyvek® keeps out workplace hazards like mold, fiberglass, lead, asbestos and aerosols—even light chemical splashes and radioactive dust. Yet it breathes to keep you comfortable all day long. Whatever the job, there's a Tyvek® garment to fit your needs. It's protection you can count on. From a name you can trust.

### PHYSICAL PROPERTIES - FABRIC DATA

*Typical values, not specifications.*

PROPERTY	TEST METHOD	RESULT
Thickness	ASTM D1777	5.9 mils
Basis Weight	ASTM D3776	1.2 oz/yd <sub>2</sub>
Burst Strength - Mullen	ASTM D774	50 psi
Seam Strength	ASTM D1683	> 19 lb <sub>f</sub>
Breaking Strength - Grab (MD)	ASTM D5034	18 lb <sub>f</sub> /in
Breaking Strength - Grab (CD)	ASTM D5034	22 lb <sub>f</sub> /in
Hydrostatic Head	AATCC 127	45 inches H <sub>2</sub> O
Surface Resistivity (25°C / 55% RH)	ASTM D257	< 6.3 x 10 <sup>9</sup> ohms/square
Wearing Apparel Flammability	16 CFR 1610 (?)	Class 1

**BUY NOW!**

• DUPONT •  
**Tyvek**



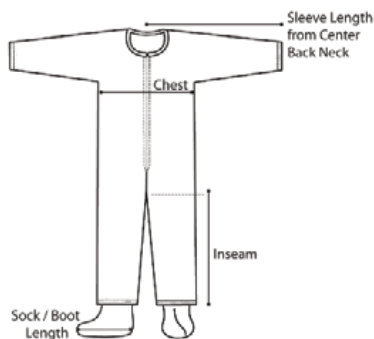
**CLICK HERE FOR A QUICK VIDEO!**



### TY125S WH

**TY125 Coverall with a tailored fit and elastic wrists and ankles for a tighter fit at garment openings**

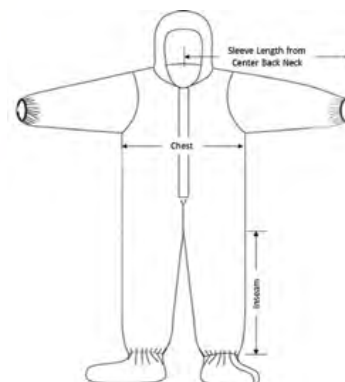
SKUs:  
TY125SWHMD002500  
TY125SWHLG002500  
TY125SWHXL002500  
TY125SWH2X002500  
TY125SWH3X002500  
TY125SWH4X002500  
TY125SWH5X002500



### TY122S WH

**TY122 Coverall with a respirator fit hood and skid-resistant boot covers**

SKUs:  
TY122SWHLG002500  
TY122SWHXL002500  
TY122SWH2X002500  
TY122SWH3X002500  
TY122SWH4X002500  
TY122SWH5X002500  
TY122SWH6X002500



SAFETY  
SOLUTIONS**TYVEK® 500 HV** PART TY125S HV XC**Ergonomic-protective design collar coverall**

- Tyvek® zipper and flap
- Elastic wrists and ankles
- Elastic waist, serged seams
- Fluorescent orange with grey retro-reflective material
- Retroreflective bands form a symmetric "X" on the back of the coverall to distinguish rearward and forward orientation of the wearer

Fabric/Materials	Tyvek® 500 HV
Design	Coverall w/ Elastic Wrists and Ankles
Seam	Serged
Color	Fluorescent Orange
Quantity/Box	25 per case
Sizes	SM, MD, LG, XL, 2X, 3X, 4X, 5X, 6X
Option Codes	XC

**BUY NOW!**• DUPONT •  
**Tyvek****TYVEK® 500 HV** PART TY127S HV XC**Ergonomic-protective design respirator fit hood coverall**

- Respirator fit hood
- Tyvek® zipper and flap
- Elastic wrists and ankles, elastic waist, serged seams
- Fluorescent orange with grey retro-reflective material
- Retroreflective bands form a symmetric "X" on the back of the coverall to distinguish rearward and forward orientation of the wearer

Fabric/Materials	Tyvek® 500 HV
Design	Coverall w/ Resp. Fit Hood, Elastic Wrists and Ankles
Seam	Serged
Color	Fluorescent Orange
Quantity/Box	25 per case
Sizes	SM, MD, LG, XL, 2X, 3X, 4X, 5X, 6X
Option Codes	XC



SAFETY  
SOLUTIONS**TYCHEM® 2000 SFR** PART QS750T GR**Bib overall and jacket combo**

- Provides chemical and secondary flame protection in a lightweight garment
- Intended to be worn over primary flame-resistant garments
- Double storm flap
- Adjustable webbing straps with buckle closure
- Elastic wrists, open ankles, taped seams

**BUY NOW!**

DuPont Tychem® 2000 SFR

**CLICK HERE FOR A QUICK VIDEO!****TYCHEM® 2000 SFR** PART QS275T GR**Sleeved apron**

- Provides chemical and secondary flame protection in a lightweight garment
- Intended to be worn over primary flame-resistant garments
- 44" long sleeved apron
- Hook and loop neck closure
- Elastic wrists, taped seams

**TYCHEM® 2000 SFR** PART QS127T GR**Coverall with respirator fit hood**

- Provides chemical and secondary flame protection in a lightweight garment
- Intended to be worn over primary flame-resistant garments
- Attached hood with chin flap
- Front zipper closure
- Elastic ankles, wrists, and waist; taped seams

**TYCHEM® 2000 SFR** PART QS128T GR**Coverall with respirator fit hood and boot flaps**

- Provides chemical and secondary flame protection in a lightweight garment
- Intended to be worn over primary flame-resistant garments
- Attached hood with storm flap
- Attached socks with outer boot flaps
- Elastic wrists, taped seams



SAFETY  
SOLUTIONS

## HONEYWELL NORTH® RU8800 HALF MASK PART RU88001 SERIES

Triple flange design equals superior fit:  
comfort and protection

**BUY NOW!**
**Honeywell**

- Triple flange provides three sealing surfaces to ensure sealing security
- Soft and flexible silicone facepiece - comfortable for all day use
- Wraparound design contours to the user's face
- Pleats on the facepiece provide gentle pressure to create a better seal

## HONEYWELL FULL FACEPIECE PART RU6500

Comfort for your workers - and your budget

- Silicone seal provides excellent facepiece seal: creating a barrier against contaminants
- Silicone nose cup is soft and comfortable for all day wear
- Polycarbonate lens with wide field of vision maximized peripheral visions plus downward view: meets ANSI Z 87 for high impact



## HONEYWELL HALF MASK PART 7700 SERIES

The benchmark in half masks

- Converts to PAPR or supplied air respirator. Latex free
- Lower headstraps stretch and move with the worker for more comfort without pulling on the facepiece
- The benchmark in half masks designed to provide maximum comfort: fit and performance
- Upper headstraps have minimum give to provide secure support

## HONEYWELL FULL FACEPIECE PART 7600 SERIES

The most comfortable mask available

- 100% medical grade silicone sealing area with dual flange for superior fit and comfort. Latex free
- Lens offers 200 degree field of vision
- Nose cup standard
- Reduces fogging and increases worker comfort



SAFETY  
SOLUTIONS

## HONEYWELL ANTIMICROBIAL-PROTECTED DISPENSERS FOR EARPLUGS PART HL400 SERIES

Earplug dispensers designed to meet today's safety needs

- Easy to use — workers can access earplugs quickly with easy twist knob
- Available with prefilled canister of 400 pairs of earplugs
- Uncorded Dispenser is Compatible with all Howard Leight™ disposable earplugs MAXIMUM, MAXIMUM Lite, Laser Lite®, FirmFit®, and Xtreme®
- Easy to install — Universal hole positions eliminate the need to drill new holes

BUY NOW!

Honeywell

## HONEYWELL LEIGHT® SOURCE 500 EARPLUG DISPENSER PART LS-500

The Leight Source 500 earplug dispenser is made of anodized aluminum and is designed to be mounted on a wall

The Leight Source 500 earplug dispenser provides a highly visible, user-friendly, permanent hearing protection center. Built with heavy-duty anodized aluminum and designed for wall installation, the Leight Source 500 dispenses earplugs with a simple turn of the handle, providing a cleaner and economical source for earplugs.

- Ideal for large factories and process industries that have zero tolerance for packaging waste
- Heavy-duty anodized aluminum withstands constant use
- Mount on wall for easy access
- Crank handle to dispense earplugs
- Ideal for large factories and process industries



## HONEYWELL LASER LITE® EARPLUGS PART LL SERIES

Excellent noise reduction in a low-pressure, high-vis disposable foam earplug

- Recommended for agriculture, construction, fire, forestry, government, law enforcement, manufacturing, mining, steel and metals, transportation, utilities, welding
- Formable foam expands to fit most wearers
- Contoured T-shape for easy insertion and wear
- Smooth, soil-resistant closed-cell foam skin prevents dirt build-up
- Available in uncorded and corded versions as well as multiple uncorded dispenser refills; corded dispenser & refills Coming Soon!



## HONEYWELL EARPLUGS REFILL BAG PART 7600 SERIES

It's all about choice

Earplug dispensers offer a cost-effective solution to outfitting many workers with hearing protection: saving money while eliminating waste. The canisters are a level 7 blow-molded recyclable plastic: which can be recycled just like a water bottle: making it an economic benefit. To be more environmentally friendly: choose the zip top bag of earplugs: and refill your stock by reusing the canister.

- ZipTop Bags of 200 prs per bag (10 bags per case)
- Canister can be refilled using the zip bags



SAFETY  
SOLUTIONS

## CUT LEVEL 3 NITRILE DIPPED GLOVES

PART 48-22-8930

**Designed to provide ultimate durability, all-day comfort  
and best in class dexterity for handling small objects**

- Feature ANSI and EN cut level III protection
- Best in class puncture resistance to help prevent injuries from sharp objects on the jobsite
- Best in class grip performance
- SMARTSWIPE™ fingertips and palms provide full access to touchscreen devices without removing the gloves

BUY NOW!

## IMPACT CUT LEVEL 3 NITRILE DIPPED GLOVES

PART 48-22-8970

**Offer impact protection with high dexterity**

- ANSI/ISEA Impact Level 2 Rated
- ANSI Cut Level 3 Rated
- Impact-rated enhanced TPR added on the back of the hand for enhanced protection
- Reinforced nitrile coating between the thumb and index finger for enhanced durability in high wear points
- Available in sizes S-XXL so you can get your perfect fit



## IMPACT CUT LEVEL 3 GOATSKIN LEATHER GLOVES

PART 48-22-8770

**Heavy-duty work gloves offer impact protection with comfortable leather**

- ANSI/ISEA Impact Level 2 Rated
- ANSI Cut Level 3 Rated
- Impact-rated enhanced TPR added to the back of the hand for better protection, and an additional layer of leather reinforced the palm to last longer
- Made from soft top grain goatskin leather to provide you with maximum comfort and performance.
- Available in sizes S-XXL so you can get your perfect fit





SAFETY  
SOLUTIONS

## HIGH-VISIBILITY CUT LEVEL 3 POLYURETHANE DIPPED GLOVES

PART 48-73-8930

Designed to provide a better fit and better protection

- Hi-vis cut resistant gloves have a reinforced nitrile coating between the thumb and index finger for enhanced durability in high wear points
- Knit with 15 gauge for better dexterity when handling small objects
- Breathable gloves are lightweight for comfortable all-day wear
- Feature color ID bands for you to easily identify cut levels
- Available in sizes S-XXL so you can get your perfect fit

BUY NOW!

## CUT LEVEL 3 HIGH DEXTERITY POLYURETHANE DIPPED GLOVES

PART 48-73-8730

Provides the best temporary power anywhere

- Made of an 18-gauge knit for total mobility
- Gloves have a reinforced nitrile coating between the thumb and index finger for enhanced durability in high wear points
- The polyurethane dip makes the glove feel lighter and more breathable while working
- Milwaukee® SMARTSWIPE™ fingertips provide you with full access to your touchscreen devices without removing the gloves
- Feature a color-coded wrist band for easy cut level identification



## SAFETY HELMET (USA) TYPE 2

PART 48-73-1300

Type 2 safety helmets deliver you better protection and more comfort

- Offer protection from top and side impacts
- Four BOLT™ accessory slots and two universal accessory slots that easily integrate additional personal protection equipment and accessories
- Includes a BOLT™ Marker Clip for easy access to pens and markers
- Comfortable padded suspension
- Comfortable fit – 5 adjustable buckles chin strap



SAFETY  
SOLUTIONS

## MSA CONFINED SPACE ENTRY PRODUCTS

**BUY NOW!**
**MSA**  
The Safety Company


### ALTAIR® 5X MULTIGAS DETECTOR

- Internal pump can sample from 50+ feet away
- 4-, 5- and 6-gas configurations
- 3-year warranty
- State-of-the-art MSA XCell® Sensors— 2X faster than industry average



### WORKMAN® TRIPOD

- Set up and dismantle without tools
- Automatic hinge-lock legs with incremental adjustment
- Skid-resistant feet
- Available with Workman Rescuer (shown) and Hoist or Rescuer only



### ALTAIR® 4XR MULTIGAS DETECTOR

- State-of-the-art MSA XCell® Sensors— 2X faster than industry average
- 4-year warranty
- IP 68 waterproof to 6' for 1 hour
- 25' drop tested



### MANHOLE GUARD SYSTEM

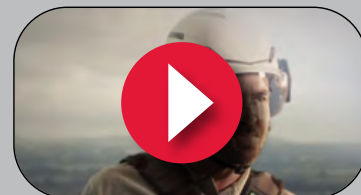
- Confined space vertical entry and fall protection
- Barricades exposed entry points
- Easy to set up and dismantle— no tools required
- Kickplates and wheels available

SAFETY  
SOLUTIONS

## MSA HEAD PROTECTION


**BUY NOW!**
**MSA**  
The Safety Company

### VIDEO COMFORT WITHOUT COMPROMISE: MSA V-GARD® H1 SAFETY HELMET


[CLICK HERE FOR A QUICK VIDEO!](#)


### V-GARD® HARD HATS

- Type I General Purpose Class E
- Certification: ANSI/ISEA Z89.1 2014
- Three sizes: small, standard, large
- Logo printing and striping available



### V-GARD® H1 CLIMBING HELMET

- Available vented or non-vented
- Non-contact foam liner for optimal cooling and hygiene
- Field-replaceable four-point chinstrap
- Made in the USA



### SKULLGARD® HARD HATS

- Type I General Purpose / Elevated Temperature Class G
- Certification: ANSI/ISEA Z89.1 2014
- Available as cap (front brim) or hat (full brim)
- Three sizes: small, standard, large



### LOGO EXPRESS® SERVICE

- Stock and custom logos available
- Reflective striping available—20+ configurations
- Up to four logos can be printed on most helmets
- Custom configuration available. Ask us!



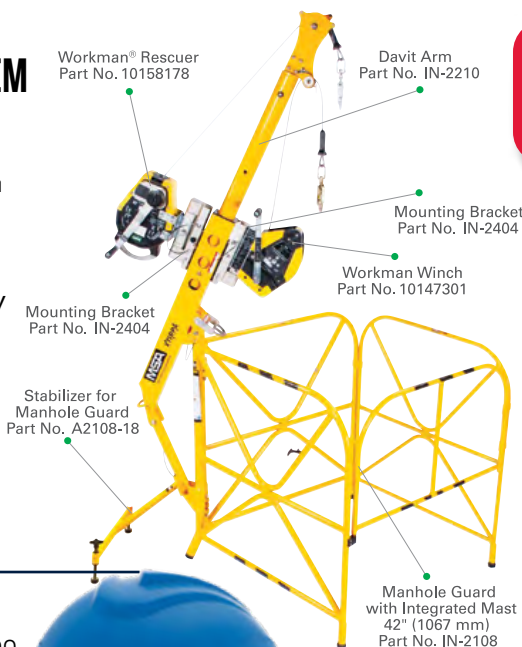
SAFETY  
SOLUTIONS

## MSA XTIRPA MANHOLE GUARD SYSTEM

PART A2108-18

Use for confined space entry and fall protection when portable base is needed

MSA XTIRPA confined space entry systems allow for vertical or horizontal entry into many common confined space applications such as tanks, vessels, transformers, sewers and manholes. These systems are lightweight, portable and easy to set-up, allowing users to save time throughout the workday.



BUY NOW!

**MSA**  
The Safety Company

- Allow for vertical or horizontal entry into many confined space applications such as tanks, vessels, transformers, sewers, and manholes
- Systems are lightweight, portable, and easy to set up
- Weight capacity: 400 lbs. (181 kg)

## V-GARD® C1™ HARD HAT PART 10215830

The coolest hard hat on the market

Hard hats with cooling thermal barrier known for comfort, quality, and durability.

- Helps alleviate heat stress for workers in sunny conditions with ReflectIR™ Thermal Barrier technology that keeps the hard hat interior up to 20°F (11°C) cooler
- Optional large vents with strategic placement for improved air flow
- Premium moisture-wicking sweat band with breathable foam padding
- Full trim with 12% greater coverage provides additional shade and sun protection



Color	Non-Vented	Vented
WHITE	10215837	10215828
RED	10215838	10215829
BLUE	10215839	10215830
GREEN	10215840	10215831
YELLOW	10215841	10215832
ORANGE	10215843	10215834
BLACK	10215844	10215835
GRAY	10215845	10215836
HI-VIZ ORANGE	10215842	10215833
CUSTOM COLOR	Custom color options available.	

## ALTAIR IO™ 4 GAS DETECTION WEARABLE SUBSCRIPTION-BASED PLATFORM

A secure, smart gas detector with out-of-the-box connectivity packed into an ultra-rugged design

The ALTAIR io 4 is a secure, smart gas detector with out-of-the-box connectivity packed into an ultra-rugged design - featuring our XCell sensor platform which continues to lead the industry in lifetime and durability.

- Comprehensive subscription program includes hardware and software, gives you access to cloud-based solutions enabling faster implementation, increased warranty coverage and automatic software and firmware upgrades – with minimal capital expense
- Designed with fully integrated connectivity for real-time visibility across your worksites from Day One
- Deploys in seconds, right out of the box
- Rugged, durable design and Industry-Leading XCell® Sensors
- 1 to 4 gas options available



SAFETY  
SOLUTIONS

## G-TEK® POLYKOR® X7™ SEAMLESS KNIT BLENDED GLOVE

NEOFOAM® COATED PALM & FINGERTIPS - TPR IMPACT PROTECTION

Seamless construction offers increased comfort and breathability

- PolyKor® blended shell with X7™ technology
- NeoFoam® coated palm and fingertips
- Touchscreen compatible
- Reinforced thumb crotch
- Thermo Plastic Rubber (TPR)
- Knit Wrist with color-coded hems
- PART NUMBERS: 16-MP785/M, 16-MP785/L, 16-MP785/XL, 16-MP785/XXL

**BUY NOW!**



## G-TEK® POLYKOR® SEAMLESS KNIT BLENDED GLOVE

WITH NITRILE MICROSURFACE COATED PALM & FINGERTIPS - TPR IMPACT PROTECTION

Seamless construction offers increased comfort and breathability

- PolyKor® blended shell
- Nitrile Microsurface coated palm and fingertips
- Double-dipped palm and fingertips
- Knit Wrist with color-coded hems
- Heavyweight Thermo Plastic Rubber (TPR)
- PART NUMBERS: 16-MPH430/M, 16-MPH430/L, 16-MPH430/XL, 16-MPH430/XXL



### BARCODES

ITEM	EACH	CASE
280-HP241R-01	620606000152	10620606000159
280-HP241R-02	620606000169	10620606000166
280-HP241R-03	620606000176	10620606000174
280-HP241R-04	620606000183	10620606000180
280-HP241R-08	620606000220	10620606000227
280-HP241R-09	620606000237	10620606000234
280-HP241R-14	620606000270	10620606000277
280-HP241R-15	620606000275	10620606000273

## DYNAMIC WHISTLER CAP STYLE NON-VENTED HARD HAT WITH WHEEL RATCHET

- Meets -ANSI/ISEA Z89.1 Type 1 and CSA Z94.1 Type 1 requirements
- Fulfills Class E Electrical Insulation requirements
- Lightweight shell made with UV stabilized High Density Polyethylene (HDPE) reduces worker fatigue
- 4-Point quick release suspension with strong textile straps and crown comfort pad provides a comfortable and secure fit
- SURE LOCK wheel adjustment system for one hand size adjustments
- Precise height adjustment settings to ensure proper depth



## ZENON Z12 FOAM RIMLESS

POLYCARBONATE LENSES BLOCK 99.99% OF THE SUN'S ULTRAVIOLET RAYS

Popular Z12 style with foam padding to keep out dust and airborne particles

ITEM #	FRAME COLOR	LENS COLOR & COATING
250-01-F020	Black	Clear, Anti-Scratch/Anti-Fog
250-01-F021	Black	Gray, Anti-Scratch/Anti-Fog
250-01-F022	Black	Indoor/Outdoor, Anti-Scratch/Anti-Fog

- Lightweight, rimless design provides all day user comfort
- Molded nose bridge design
- Variety of lenses available
- 9.5 Base curve lens
- Thin, flexible temples provide a secure fit without uncomfortable pressure points

**bouton**  
OPTICAL

SAFETY  
SOLUTIONS

## POWDER-FREE BLUE NITRILE GLOVES GNPR (SIZE)-1M

**The perfect compromise between latex and vinyl!** Nitrile is made from an allergy safe compound that feels a lot like latex but it is much stronger, costs less, and is more comfortable to wear. Nitrile is perfect for demanding applications, especially cleaning and dishwashing. Powder-free gloves go through an extra process of chlorinating the gloves to ease donning. Tough, smooth and economical for everyday usage. Resistant to most chemicals. Also available in green and orange.

**BUY NOW!**

## POWDER-FREE BLACK NITRILE GLOVES

GNPR-(SIZE)-1-K

Powder-free black nitrile glove. Strong & durable protection for automotive use and all kinds of dirty work.



## POWDER-FREE CLEAR VINYL GLOVES

GVP9-(SIZE)-1

**Our most popular general purpose glove!** Vinyl gloves are stronger than polyethylene gloves, and offer greater comfort for jobs like food preparation, bussing, and cleaning where gloves will be worn for a greater period of time. Vinyl gloves are also less expensive than nitrile and latex gloves. Powder free gloves go through an extra process of chlorinating the gloves to ease donning.



## 12" POWDER-FREE BLUE LATEX GLOVES

GRHL-(SIZE)-5M-P

Heavy-duty, powder-free blue latex glove. Double chlorinated and acetone-resistant. Natural fit for optimal dexterity.





SAFETY  
SOLUTIONS

## WHITE POLYPROPYLENE HOOD

DHOOD-2000

Latex-free spunbond polypropylene hood.  
Breathable and efficient, one size fits all.

**BUY NOW!**

## BLUE POLYPROPYLENE DISPOSABLE SHOE COVER WITH TREAD (DISPENSER BOXED)

DSCL-300

Latex-free blue polypropylene shoe cover with tread. Comfortable and effective.  
Available in a variety of sizes.



## WHITE BOUFFANT CAPS

DBWH-(SIZE)-1

Spunbond polypropylene white bouffant cap. Porous and resilient for all-day usage.  
Available in a variety of sizes.



## WHITE BEARD COVERS

DBRD-1000

Latex-free spunbond polypropylene white beard cover. Intricate elastic fit for  
relaxed protection.



SAFETY  
SOLUTIONS

## GREEN VINYL APRONS

DAV20-36X50

Latex-free green vinyl apron with .2 MM thickness for maximum protection. Belly patch and string ties included for a snug fit. Available in a variety of sizes.

**BUY NOW!**

## WHITE CONE MASK

RS-810

Latex-free white nuisance dust mask. Adjustable nose band and polyester allow for an unencumbered fit.



## WHITE HEAVYWEIGHT HAIRNET

DPHN-SIZE-1

Our hairnets are manufactured with the same high quality standards we apply to all of our products. Colors options include, white, brown, light brown and black. Choose from either a heavyweight polyester or a lighter weight nylon. Polyester. 100% Latex-Free.



## ORANGE PVC WITH ROUGH FINISH AND JERSEY INSULATED FOAM LINING & SAFETY CUFF

GPOF-SC-2R

Orange PVC glove with rough finish and jersey insulated foam lining. Extended cuff for maximum protection. Easy to wear, but nearly impossible to penetrate.





# VENDOR MANAGED SOLUTIONS

CLICK HERE TO VISIT THE VENDOR MANAGED SOLUTIONS PAGE ON OUR WEBSITE!

## Maximize ROI by Outsourcing Stockroom Management

Many companies struggle to maintain adequate levels of stockroom inventory resulting in overstocks and shortages. The AiM program saves you money by effectively outsourcing these functions, freeing up your team to work on more valuable tasks.

AiM can manage, re-organize and setup your stockroom with barcoded locations and identify min and max levels. A&M technicians can maximize your productivity by replacing time-consuming functions that do not yield a return, like;

- Perform regular recounts (weekly, monthly, etc.)
- Place purchase orders for replenishment
- Receive material when it arrives
- Pay for inbound freight and restock the appropriate bins

## How Does AiM Work

Our technician visits your site on a regular schedule to scan bar codes assigned to each bin and record the count using the AiM app. The app compares the count to the mini and max and generates an order for the optimal fulfillment quantity. The technician returns to stock the items generated from the previous visit, while recounting to generate new items required.

## AiM Stockroom Application (App)

- Available on all Apple products
- Camera scans bar codes
- User enters counts
- App calculates quantity needed and transmits replenishment order to A&M ERP system
- Track history and usage of products by user
- Shows active stock and WIP from A&M warehouse



## How AIM Vending Saves Money

The AiM program can also provide further savings by utilizing a vending solution. When there is no accountability for free stock, usage grows and expenses increase. AiM joins forces with you to select the right vending solution to meet your facility needs. Once installed, we maintain the agreed upon stock levels and provide regular usage data by user and item. This customized inventory system will produce savings.

## Vending Program Benefits

- **CONTROL** employee supplies with secure dispensing that provides accountability that can be restricted by product, employee or pre-determined quantity limits
- **ENSURE** employee productivity with access to the right amount of supplies, in the right location, and at the right time to have uninterrupted work
- **TRACK** dispensing of supplies 24/7 with real-time, item-based reporting accessible through web portal
- **PROTECT** against pilfering of high-end items with secure access
- **PROVIDE MRO** cost-saving opportunities with reductions in inventory





# ROBOTICS: THE FUTURE OF MATERIAL TRANSPORT & OPERATIONAL EFFICIENCY HAS ARRIVED.

CLICK HERE TO VISIT THE ROBOTICS PAGE ON OUR WEBSITE!

Effidence Robotic Logistic Solutions are dedicated to improve logistics performance in warehouses, production facilities, and industrial environments. These solutions offset rising fulfillment costs and address many inventory management issues, while they **improve profitability, productivity, and accuracy.**



## A BEST-IN-CLASS LOGISTICS SOLUTION AT AN AFFORDABLE PRICE POINT

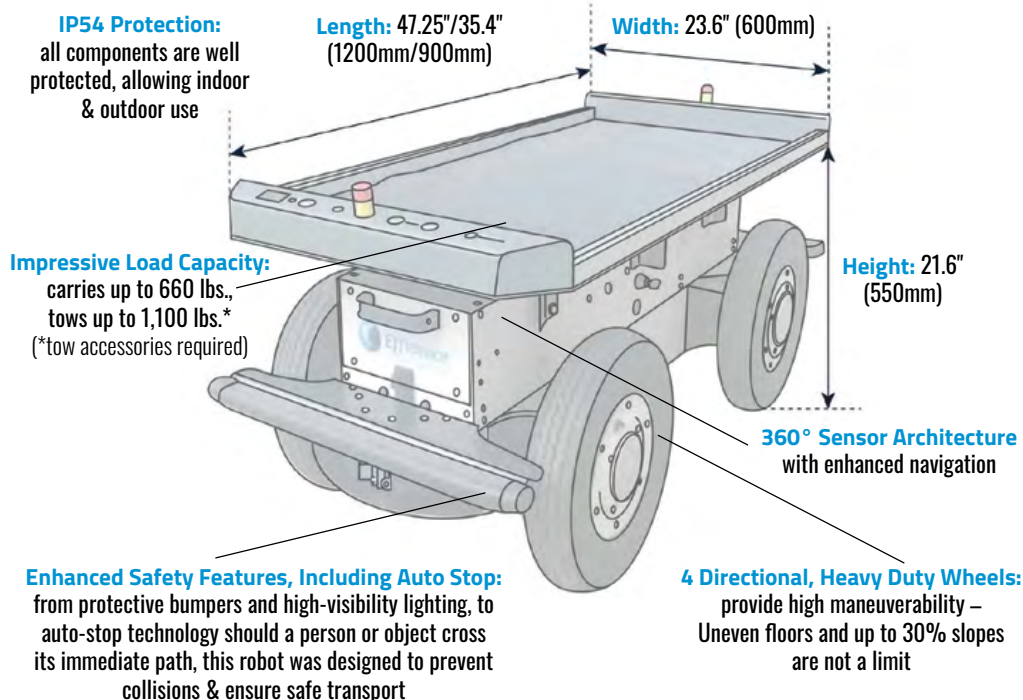
The **EffiBOT (AGV/AMR)** is a versatile autonomous mobile robot that allows both collaborative and autonomous use. This versatility, paired with cutting edge features and a durable design that permits use in all-weather environments, makes the EffiBOT an ideal solution to introduce automation or further your facility's automation efforts. With inflation placing upward pressure on wages and operating costs, Effidence Robotic Logistic Solutions provide a cost effective means to more a efficient and sustainable operation.



**2** VERSATILE  
OPERATING  
MODES

## THE INDUSTRY-LEADER IN PERFORMANCE & SAFETY

The EffiBOT's compact, patented design includes:



### A 'FOLLOW-ME' ROBOT

Utilizing 'follow-me' functionality, EffiBOT follows a picking operator and no cart is pulled or pushed manually, providing an obvious productivity gain.



### A FULL AUTONOMOUS ROBOT

Full autonomous handling allows automatic parts delivery to assembly line, and material transfer between various locations.



# ROBOTICS: BUILD A MORE COST-EFFECTIVE & SUSTAINABLE OPERATION

We proudly distribute the full line of Effidience Robotic Logistic Solutions, and can partner with you to find the right automated technology for your facility. With options ranging from compact material transport robots to large-scale robotized tuggers and pallet stackers, we can provide solutions that will streamline your operations and logistics.

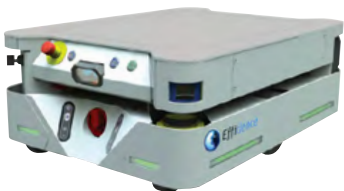


## EffiBOT XS (AMR)

- fully autonomous
- 360° sensor architecture
- 660 lb. load capacity
- small footprint & most compact in series

## EffiBOT XL (AMR)

- fully autonomous
- 360° sensor architecture
- 2,200 lb. load capacity
- small footprint & most compact series



## EffiBOT (AGV / AMR)

- follow me and autonomous mode
- 360° sensor architecture
- advanced navigation
- 660 lb. load capacity
- 1,100 lb. tow capacity
- indoor/outdoor IP54 protection



## EffiBOT-T Tugger

- fully autonomous
- 360° sensor architecture
- advanced navigation
- 2,000 lb load capacity
- 5,000 lb. tow capacity



## EffiBOT-P Stacker

- follow me and autonomous mode
- 360° sensor architecture
- advanced navigation
- 3,500 lb. load & lift capacity
- Available early 2023







## PROCESS SOLUTIONS

CLICK HERE TO VISIT THE PROCESS SOLUTIONS PAGE ON OUR WEBSITE!

A&M is a leading supplier for premier manufacturers serving the process industry. The Process Systems team is backed by an extensive inventory of steam process equipment, flow control, valve automation, instrumentation, sensors, custom hoses and ancillary items. Our partner manufacturers are the best in the industry—based on their performance, quality and cost-effective solutions.

### Solutions for Process Piping and Critical Applications

- Steam trap surveys, condensate system audits, steam process heating, and HVAC audits
- Valves and automation packages
- Process piping systems
- Instrumentation
- Pressure and temperature measurements
- Safety relief valves and rupture discs
- Gate, globe, ball, butterfly, plug, cryogenic, high pressure, metal seated, high performance valves
- Fugitive emission valves, chlorine valves, high cycle, fire-rated, multi-port directional valves
- Sanitary valves and piping
- Fail-safe electric actuators
- Custom hoses and assemblies

### Steam Trap Surveys

- Save valuable energy dollars by identifying failed steam traps with a Steam Trap survey
- Creates a complete inventory of all your traps so you can manage operation and materials
- Can eliminate costly and dangerous water hammer

### Condensate System Audits/Surveys

- Save valuable energy, water and chemical treatment dollars by maximizing efficiency of your condensate return system
- Can eliminate costly and dangerous water hammer
- Improve boiler efficiency and life cycle

### Steam Process Heating and HVAC Efficiency Evaluations/Audits

- Can improve Batch process heat up / startup times
- Improve Process throughput rates and control
- Improve process / heating equipment life cycles by eliminating routine water hammer

### Education and Training

- We can provide your personnel with training seminars from short one-hour programs to full-day or multi-day programs

*Valve Inventory*



*Steam System Audit*

Click on the logo below to view the manufacturer's product listings.





PROCESS  
SOLUTIONS

## UNIVERSAL STYLE TRAP-CONNECTOR SYSTEM

Multiple choices for trap modules and connectors

The UC450 Series QUICK-CHANGE Universal Trap-Connector System with multiple choices for trap modules and multiple choices for connectors is used in steam systems where a simplified and economical maintenance program of steam traps is desired. These Universal Style quick replacement steam traps can be used on steam supply lines as well as for tracing and small process applications. They are commonly used in chemical plants, petrochemical refineries, paper mills and other industrial facilities.



## PILOT-OPERATED REGULATING VALVE CAST STEEL BODY

Constructed of cast carbon steel for higher pressure and temperature ratings

- Cast Steel body for higher pressure and temperature ratings
- New, convenient two-bolt pilot design simplifies installation
- Hardened stainless steel trim for extended life
- Full port strainer and blowdown valve on pilot adapter for ultimate protection from dirt and scale
- Optional Stellite trim available
- Maintains downstream pressure + 1.0 PSIG



## PRESSURE MOTIVE STAND ALONE PUMPS

Constructed of cast carbon steel for higher pressure and temperature ratings

Watson McDaniel offers Pressure Motive Stand Alone Pumps and conventional Electric Pumps for condensate recovery. Our fully-equipped ASME qualified fabrication facility will design and build either standard or specialized skid packages to meet your specific system needs.

Stand Alone Pump Units (Include patented snap-assure mechanism and inlet and outlet check valves)



## ASME CERTIFIED FABRICATION SHOP FOR ENGINEERED SYSTEMS

Condensate skid systems, instantaneous steam to water heaters, flash tank, etc.

Watson McDaniel's fully equipped ASME U and UM qualified fabrication facility stands ready to assist you with all your fabrication needs. Our engineering staff specializes in the design of pressure motive condensate pumping systems for both industrial and institutional applications. We offer either standard packages, or specialized systems to meet your specific needs.



# MATERIAL HANDLING & STORAGE SOLUTIONS

CLICK HERE TO VISIT THE MATERIAL HANDLING & STORAGE SOLUTIONS PAGE ON OUR WEBSITE!

## Application Assessment to Logistics

Our seasoned team evaluate the workplace environment to make application-specific product recommendations with many products meeting or exceeding ANSI or CE standards. We manage the logistics for all domestic and foreign deliveries to ensure your peace of mind.

## Saving Space and Expense

Instead of building an addition onto your existing building or warehouse, choose high density storage and optimize your investment.

## Custom CAD Drawing

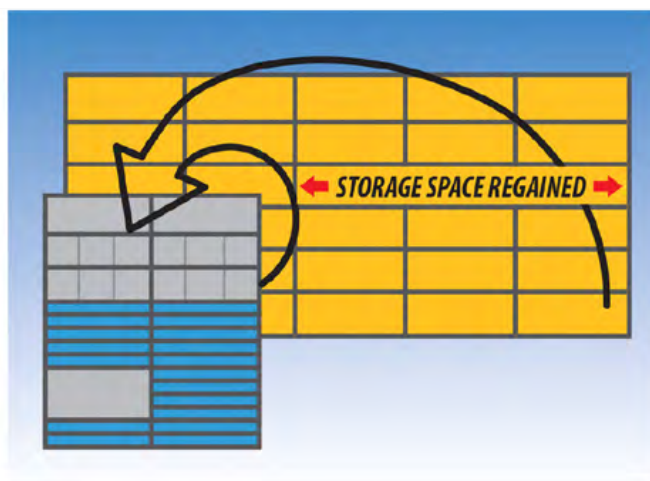
You receive customized CAD drawings to identify flow, plan and elevations that meet your unique specifications. We can perform site surveys of parts rooms, tool cribs, stockrooms and warehouse facilities. We look to provide the best possible workspace utilization solutions for our clients.



## Creating Lean Storage Space

A&M designs and installs safe, ergonomic storage systems to meet OSHA standards, improve loss prevention and increase operational efficiency. Our mission is to maximize your space, dramatically improve storeroom efficiency and provide a safe working environment.

A lean approach focuses on the elimination of wasted employee motion, excessive inventories, unnecessary transportation, material waste. Save space by converting five units into two.



Click on the logo to go to the manufacturer's section.





**MATERIAL HANDLING &  
STORAGE SOLUTIONS**



## GRIPHOOK™

**Lightweight, self-gripping the GripHook™ is your forklift necessity. Turn your forklift into a hoist with options to lift up to 2-tons.**

Lift-All's new patent pending GripHook design converts your fork truck into an overhead lifting device in a matter of seconds. This is a must for contractors, manufacturing plants, power plants, distribution centers, rental houses, and any other facility using fork trucks. The self-gripping design allows the GripHook to tighten around the fork when a load is applied. The easy to attach GripHook does not require any tools to install.

- Turns your forklift into a hoist in a matter of seconds
- Allows forklift to lift and support loads from the bottom of the forks
- Self-gripping to the fork so there's no need to tighten attachment to the fork, saving you time

Part Number	Capacity	Description
GH4S-1	1-TON	GripHook w/Swivel Hook for 4" Fork
GH5S-1	1-TON	GripHook w/Swivel Hook for 5" Fork
GH6S-1	1-TON	GripHook w/Swivel Hook for 6" Fork
GH5S-2	2-TON	GripHook w/Swivel Hook for 5" Fork
GH6S-2	2-TON	GripHook w/Swivel Hook for 6" Fork

**CLICK TO CONTACT A&M OR  
CALL A REPRESENTATIVE TODAY!  
800.864.2660**



## TUFF-EDGE® III

**Tuff-Edge® slings offer softer web, increased abrasion, and edge-cut resistance.**

Tubular edge design with damage-resistant core helps protect the body fibers from cutting, keeping the integrity of the sling intact without compromising its strength.

- 30% more resistant to edge damage than our Tuff-Edge® II webbing
- New EDL the first visual edge damage limit out-of-service marker
- Superior edge cut and abrasion performance
- Soft twill weave body with no coated edge yarns
- Easy to identify by the blue tubular edges and EDL marker

WEB EDGE CUT PERFORMANCE CHART				
Webbing Design	Edge Construction	Comparative Web Edge Cut Test Performance Rating		
		Poor		Superior
Tuff-Edge® III	Tubular with Reinforced Core			
Tuff-Edge® II	Polymer Edge			
Webmaster™ 1600 Polyester	Standard			



**Sewn in  
the USA**





**MATERIAL HANDLING &  
STORAGE SOLUTIONS**

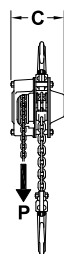


## MANUAL CHAIN HOISTS

Perfect for low-headroom lifts, manual chain hoists are a lightweight, economical solution for your industrial applications

- Weston style mechanical load brake is self-adjusting, and is enclosed to limit contamination
- All gears and shafts run on caged roller bearings for smooth operation and long life
- Drop forged alloy hooks with a heavy-duty cast steel safety latch

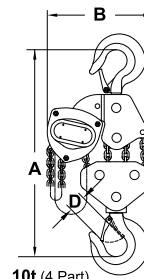
**CLICK TO CONTACT A&M OR  
CALL A REPRESENTATIVE TODAY!  
800.864.2660**



1/2 - 2t  
(1 Part)



3t & 5t  
(2 Part)



10t (4 Part)



## LEVER CHAIN HOISTS

Designed from high quality materials, Lever Chain Hoists feature non-slip rubber grip and 360 rotation

- Drop forged alloy hooks are designed to stretch before chain failure when overloaded and are equipped with cast steel safety latches
- Operates in any orientation

MODEL	WLL	DIMENSIONS (inches)						P (lbs.)	Weight per foot (lbs.)	Weight (lbs.) A=5-ft.
		A	B	C	D	E	F			
LCH008	1,650 lbs.	12.6	5.3	5.8	11.4	3.5	0.94	33	0.54	17
LCH015	3,300 lbs.	15.0	6.4	6.9	16.5	4.0	1.14	66	0.92	26
LCH030	6,600 lbs.	18.9	8.3	7.7	16.5	4.3	1.42	122	1.48	46
LCH060	13,200 lbs.	24.4	10.0	7.7	16.5	4.3	1.81	264	2.96	70

Available in Lifts of 10, 20 and 30 feet



## MINI LEVER HOISTS

Mini Lever Hoists can lift up to 1,100 lbs. but are small enough to fit in your toolbox

- Lightweight and durable all steel construction with chrome exterior finish to resist corrosion
- Self adjusting pawl and disc type mechanical load brake ensures positive load control
- The brake will stop a load even if the operator leaves the unit in free chain mode and in neutral

Part Number	LIFT	WLL (lbs.)	DIMENSIONS (inches)							P Max (lbs.)	Weight
			A	B	C	D	E	F	G		
MLH003X5	5	550	8.5	3.0	4.6	1.6	0.6	1.0	6.2	28	4.4
MLH003X10	10	550									
MLH005X5	5	1,100	10.0	3.5	5.3	2.0	0.8	1.3	7.1	40	7.7
MLH005X10	10	1,100									



**MATERIAL HANDLING &  
STORAGE SOLUTIONS**



**CLICK TO CONTACT A&M OR  
CALL A REPRESENTATIVE TODAY!  
800.864.2660**

**LYON**

## ALL-WELDED STEEL INDUSTRIAL STORAGE CABINET

PART # DD1120 | 48"W X 24"D X 82"H

**These heavy-duty industrial cabinets are ideal for your warehouse, garage, or industrial storage**

- 14 gauge steel
- Four adjustable shelves
- Forklift base – 4" high legs
- Made in the USA
- GREENGUARD Certified

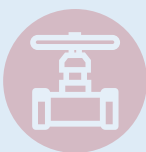
## SINGLE TIER 1 WIDE STANDARD STEEL LOCKER

PART # DD5112 | 12"W X 12"D X 78"H

**Since 1901 Lyon has been America's leading manufacturer of steel lockers for a variety of industries**

- 16 gauge door and frame
- 24 gauge body parts
- Stainless steel recessed handle
- Nano-roller latching system
- GREENGUARD Certified





MATERIAL HANDLING &  
STORAGE SOLUTIONS



CLICK TO CONTACT A&M OR  
CALL A REPRESENTATIVE TODAY!  
**800.864.2660**

**LYON**



## DRAWERS WITH 77 COMPARTMENTS QUICK SHIP MODULAR DRAWER CABINET STANDARD WIDE EYE-LEVEL HEIGHT

PART # DDM683030000GIL

The DDM683030000GIL Modular Drawer Cabinet provides you with the highest density storage for small to medium sized items, parts, or tools.

- 400 lbs. drawer capacity
- Forklift base
- Dove gray cabinet and drawers
- Multiple drawer access
- Standard lock

## 8000 SERIES OPEN STEEL SHELving 5 HEAVY-DUTY SHELVES STARTER

PART # DD8006SH | 36"W X 18"D X 84"H

Since 1901 Lyon has been America's leading manufacturer of steel lockers for a variety of industries

- 16 gauge door and frame
- 24 gauge body parts
- Stainless steel recessed handle
- Nano-roller latching system
- GREENGUARD Certified







MATERIAL HANDLING &  
STORAGE SOLUTIONS



CLICK TO CONTACT A&M OR  
CALL A REPRESENTATIVE TODAY!  
**800.864.2660**

**LYON**



## BULK STORAGE RACK WITH SOLID DECKING STARTER

PART #DD67311SD | 72"W X 24"D X 72"H

**Bulk storage rack starter with solid decking is ideal for the hand-loading of intermediate weight bulky items**

- Two welded uprights
- Six heavy-duty beams
- Solid decking panels
- Available in dove gray
- Made in the USA

## 1000 SERIES ECONOMICAL VISIBLE STORAGE CABINET

PART #PP1080V | 36"W X 18"D X 78"H

**The Economical Visible Cabinet gives you space to hold up to 900 pounds of parts and stationery as well as other supplies**

- Steel construction
- Two doors for full access
- Four shelves
- Chrome plated handle
- Grooved key lock with two keys
- Powder coat finish





# MILL SUPPLIES

CLICK HERE TO VISIT THE MILL SUPPLIES PAGE ON OUR WEBSITE!

## ONE-STOP SHOPPING

No matter what you need to operate your facility, A&M provides one-stop shopping for all your general Mill Supply and MRO product needs. A&M stocks and delivers both domestic and globally recognized name brands. At A&M Industrial, we strive to present our clients with quality products from industry-leading manufacturers, value-added technical services, and innovative inventory management solutions.

### CLEANERS, PAINT, & CHEMICALS

- Adhesives
- Greases, Oils, Lubricants
- Cleaners
- Sorbents
- Corrosion Inhibitors
- Spray/Industrial Paints/Coatings
- Food/Industrial Grade Degreasers
- Jan/San

### INDUSTRIAL SUPPLIES

- Brushes, Brooms, Shovels
- Non-Sparking Tools
- Demolition Tools
- Power Tools
- Pumps, Generators
- Hand & Power Tools
- Shop vacs
- Ladders
- Tool Boxes
- Lifting
- Traffic Control
- Mason Tools

### GENERAL HARDWARE

- Anchors, Fasteners, Shims
- Signage, Labels
- Steel Stamps



Click on the logo to go to that manufacturer's section.





MILL SUPPLIES



## SCOTCH® HIGH TACK BOX SEALING TAPE 311+

EXTRA PERFORMANCE IN COLD TEMPERATURES

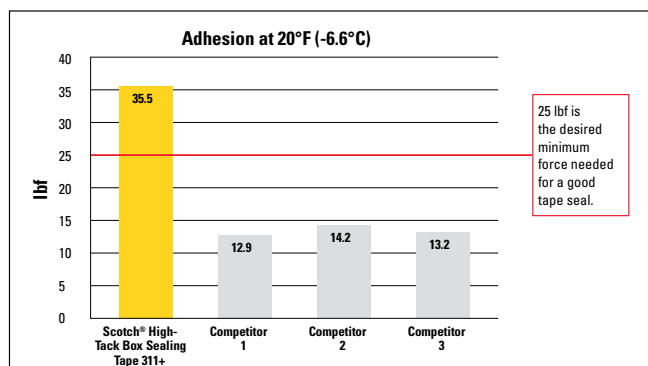
Scotch® High Tack Box Sealing Tape 3 is a high-performance industrial packaging tape for box sealing, splicing, recoupage and other demanding packaging applications. It boasts excellent performance in damp and cold shipping and storage environments, even in below freezing temperatures.

- High performance industrial packaging tape designed for cold and damp temperatures
- Great for box sealing, splicing, recoupage and demanding packaging applications
- Excellent performance over broad temperature ranges
- Adheres to highly recycled corrugated boxes
- Quick and easy application by hand, manual dispensers or 3M-Matic Case Sealers
- Ideal for the food and beverage industry, electronics packaging, pharmaceuticals, and the e-fulfillment industry

## SCOTCH® HIGH-TACK BOX SEALING TAPE 311+

Great for medium-duty and everyday packaging applications — box sealing, splicing, tabbing, bag closures, and palletized shipments.

- Excellent performance over broad temperature ranges — including freezer and refrigeration temperatures of 20 F to 50 F (-6.6 C to 10 C).
- Adheres to a variety of surfaces, including on corrugated boxes with over 70% recycled content.
- Quick, easy application by hand, manual dispensers or 3M-Matic™ Case Sealers.
- Available in 48mm and 72mm widths.

**BUY NOW!****3M**

### Scotch® High Tack Box Sealing Tape 311+

**Product**

3M 48mm X 100m (1.88" X 109YD)  
(36 Rolls Per Case)

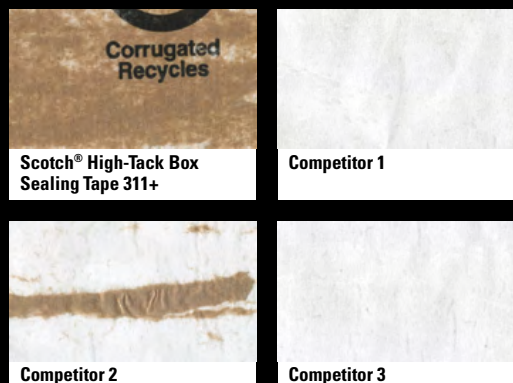
**Part #**

4658053



### Fiber Pull Test

Measures how much paper fiber the tape pulls off the box upon removal. The higher percent fiber pull, the stronger the tape bond is to the box. The following tapes tested were applied and pulled at 20°F (-6.6°C).



Food and Beverage



Ecommerce



General Industrial



Manufacturing





MILL SUPPLIES



## LPS 1® GREASELESS LUBRICANT

One can, hundreds of uses

- Moisture-displacing, dry-film for precision lubrication
- Quick penetration to loosen rusted or frozen parts
- Resists oil, dust and dirt build-up
- Safe on paint, fabric, and most plastics

**BUY NOW!**

**CLICK THE LINKS ABOVE TO LEARN MORE!**



## LPS 2® HEAVY-DUTY LUBRICANT

Take lubrication up a notch

- Heavy-duty industrial lubricant and wet-film corrosion protectant
- Great for use on indoor



## LPS 3® PREMIER RUST INHIBITOR

LPS 3® offers rust and corrosion protection for up to 2 years of indoor use

- Self-healing, soft, waxy film
- Safe to use on most surfaces
- Acceptable for use in Canadian Food Processing Establishments



**CLICK HERE FOR A QUICK VIDEO!**



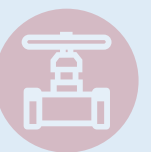
## PRESOLVE® ORANGE DEGREASER

Penetrates deep to cut through the toughest grease and grime

- High performance industrial cleaner that cleans on contact
- Ideal for removing grease, tars, and oils
- Fast acting, deep penetration
- Controlled evaporation
- Flash point above 100°F (38°C)
- Low residue
- Safe on all metals and most plastics



**CLICK HERE FOR A QUICK VIDEO!**



MILL SUPPLIES



## KB 88 THE ULTIMATE PENETRANT

Penetrates faster and deeper than other penetrants on the market

- Ultimate rust-busting penetrant for industrial applications
- Kb solvency of 151 with low surface tension enhances penetration and corrosion attack

**CLICK HERE FOR  
A QUICK VIDEO!**

**BUY NOW!**

## INSTANT SUPER DEGREASER 2.0

- **Non-flammable** – can be used on or near energized equipment. Improves safety and reduces downtime associated with de-energizing equipment.
- **Non-brominated** – improved health and safety profile for increased worker safety and simplified employer compliance.
- **Fast(er) Evaporation** – quickens clean-up time. Improves productivity and reduces downtime.
- **No Rinsing/No Residue** – no wiping or rinsing prior to next production step, reduces time and labor.



**CLICK HERE FOR A QUICK VIDEO!**



## NOFLASH 2.0 ELECTRO CONTACT CLEANER

- Industrial-strength formula for maximum cleaning power.
- Non-brominated – improved health and safety profile for increased worker safety and simplified employer compliance.



**CLICK HERE FOR A QUICK VIDEO!**



## COLD GALVANIZE CORROSION INHIBITOR

99% zinc-rich coating prevents corrosion/rust on all metal surfaces for up to three years

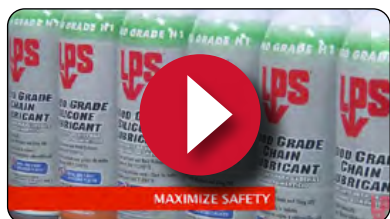
- Zinc-rich galvanized coating – Zinc Purity: 99+%
- Works like hot-dip galvanizing on ferrous metals indoors and out
- Withstands water temperature up to 212°F (100°C) and continuous dry heat up to 750°F (400°C)
- Commonly used as a flash rust preventive on welded areas
- Inhibits rust on steel under severe environments
- Provides a tough, flexible coating that will not yellow, chalk, crack, or peel



**CLICK HERE FOR A QUICK VIDEO!**



MILL SUPPLIES



CLICK THE LINKS ABOVE TO LEARN MORE!



components on LPS® food industry products are metal and x-ray detectable

BUY NOW!



## THERMAPLEX FOODLUBE BEARING GREASE

Uses only FDA ingredients. Ensures safety in areas where incidental contact with food can occur. High degree of water resistance. Excellent corrosion protection. Very good load capacity. Increases lubrication intervals. Does not contain mineral oil, solvents or silicone. Nontoxic, nonstaining nonemulsifying

- Long life
- Excellent load carrying properties
- Extends relubrication periods
- Prolongs bearing life
- Good corrosion resistance
- Reduces grease consumption
- Ideal for lubricating all types of bearings



## FOOD GRADE ELECTRONIC CLEANER

THE FIRST AND ONLY ELECTRONIC CLEANER THAT'S FOOD SAFE.

- Electronic cleaner that is food-safe for use in or around food processing areas even while food is processed
- Removes dirt, moisture and oxides from electronic equipment
- Ideal for use on off-line electronic components
- Rapidly evaporates, leaving no residue or precision mechanisms
- Manufactured for the food industry and safe for use in all plant areas



## FOOD GRADE MACHINE & PENETRATING OIL

CASTORS, CHAINS, CHANNELS, CONVEYORS, FILLING EQUIPMENT, FOOD RACKS, FOOD SERVICE CARTS, SLICERS.

- Metal detectable plastic components-DETEX®
- NSF® Certified: H1 Registration #129000 (aerosol)
- Penetrates to loosen frozen nuts and bolts
- Colorless, non-staining lubricant
- Eliminates sticking, binding, and squeaking
- Provides excellent lubricity



## DETEX SCOURING PAD

- **Detectable:** Metal particles are bonded within the blue resin and capable of detection by most metal detection equipment.\*
- **Visible:** Blue color stands out from foods processed at facility
- **Effective:** Encapsulated abrasive
- **Durable:** Resin bonded nylon 6 - 6 fibers
- Reduces the risk of foreign object contamination and expense
- Supports a facility's HACCP Food Safety Program
- Easily identifies scouring pad as a non-food object
- Helps visually identify foreign objects before end-of-line detection particles uniformly coat pad fibers
- Consistently cleans surfaces quickly and safely







MILL SUPPLIES



## DYKEM STEEL BLUE® LAYOUT FLUID

The most recognized name in layout fluids for nearly 100 years. You can depend on DYKEM® STEEL BLUE®.

- Toluene-free
- Provides a thin blue film without cracking or chipping
- Dries in minutes
- Prevents glare with a uniform, deep color
- Reduces eye strain

[BUY NOW!](#)
**DYKEM®**  
Brand

[CLICK HERE FOR A QUICK VIDEO!](#)


## DYKEM REMOVER & PREP LAYOUT FLUID

To get the job done right the first time, start and finish with DYKEM® Remover & Prep

- Prepares metal surfaces for layout fluid application
- Removes layout fluids and other marks from metal surfaces
- Dries in minutes
- Does not contain toluene



## DYKEM BRITE-MARK® MARKERS

If you're in need of a paint marker that's reliable for permanently marking a variety of surfaces and substrates, turn to BRITE-MARK®.

- General-purpose, permanent paint markers
- Durable, UV-resistant marks available in an array of colors
- Marks dry in 25-35 seconds
- Fine, medium and broad tips sizes available

## DYKEM CROSS CHECK TORQUE SEAL®



Provides a convenient visual method for identification of vibratory loosening or tampering in nuts, bolts, fasteners, and assemblies. Provides warranty protection against tampering. Marks will be easily broken if parts are tampered with or become loose. Highly visible marks. Orange, green, red, yellow and blue fluoresce under black/UV light. Excellent adhesion to metal and other substrates. Safe for most surfaces.


[CLICK HERE FOR A QUICK VIDEO!](#)



MILL SUPPLIES



## ADVANCED CIRCUIT BREAKER TRACER KIT PART ET450

Kit provides reliable tracing of energized or non-energized breakers, fuses, and wires.

- Comes with transmitter, receiver, blade and ground prongs, alligator clips, 3-foot and 20-foot lead adapters, AC plug leads, instructions, all required batteries, and a hard carrying case
- Versatile applications include tracing wires, conduit or pipes, or a single wire in a bundle
- Transmitter has AC/DC external voltage indicators of 12V, 48V, 120V, 240V, and 480V

### ET450 KIT INCLUDES:

- ET450T Transmitter • ET450R Receiver
  - 3' (0.9 m) Lead Adapters\* • 20' (6 m) Lead Adapters\*
  - AC Plug to Banana Jacks
  - Alligator Clips • Outlet Tabs • Ground Prong
  - Ten AA Alkaline Batteries
  - Hard Carrying Case with Handle
- \* Lead Adapters can all be connected end-to-end for additional length



**CLICK HERE FOR A QUICK VIDEO!**

**BUY NOW!**

**KLEIN TOOLS**  
For Professionals... Since 1857™



CE UK CA Intertek 5001748

CAT. NO.	UPC 0-92644+	DESCRIPTION
ET450	69338-0	Advanced Circuit Tracer Kit
Replacement Parts		
69357	69357-1	AC Plug to Banana Jacks
69358	69358-8	20' Lead Adapters
69359	69359-5	3' Lead Adapters
69360	69360-1	Alligator Clips and Outlet Tabs

⚠ Visit [www.kleintools.com](http://www.kleintools.com) for warnings and instructions.



MILL SUPPLIES



## PORTABLE POWER STATION PART KTB1000

Delivers a powerful 1500W of Pure-Sine Wave AC power

- Fast charge to 80-percent in 2.5 hours with included chargers
- Solar compatible with efficient MPPT
- Charge and power up to 11 devices simultaneously
- Digital LCD Screen displays real-time performance metrics including time until empty
- Large 983Wh capacity to charge more power tool batteries, make more cuts and drill more holes



Mobile charger easily fits in the storage compartment

Reusable, washable filter: Protects the Power Station from dust and dirt



Storage compartment

Handles

Units button

Display button

Info button



CLICK HERE FOR A QUICK VIDEO!

USB output on/off button

12V car port on/off button

Charging indicator

8mm input

APP® input

12V car port (12V/10A)

3 x 60W USB-C PD ports (5V-20V/3A)

3 x USB-A ports (5V / 2.4A)

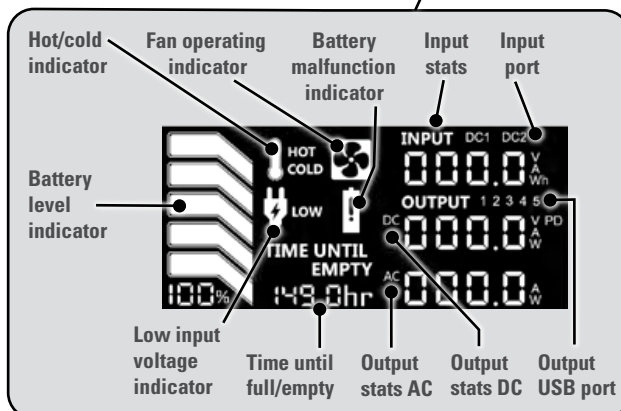
AC output on/off button

4 x AC outlets (120V / 1500W)

Air vent

Rubberized corner guards

NOTE: No user-serviceable parts inside.







MILL SUPPLIES



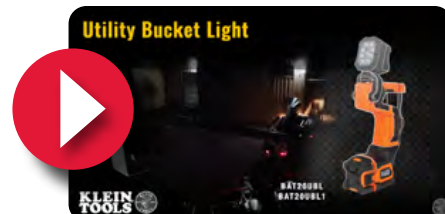
## UTILITY BUCKET LIGHT PART BAT2OUBL1

### Cordless Utility LED Light Kit

- Kit includes light, two 4Ah batteries and charger
- Lights both the inside of a bucket and the outside working area
- Clamp function locks to either the straight wall or corner of utility buckets for optimal positioning
- Rotates 300-degrees horizontally and 180-degrees vertically for maximum exposure
- Sturdy build to work standalone


**BUY NOW!**

**KLEIN TOOLS**  
For Professionals... Since 1857™



CLICK HERE FOR A QUICK VIDEO!

## UTILITY BUCKET LIGHT (TOOL ONLY) PART BAT2OUBL

Cordless Utility LED Light (tool only) provides optimal lighting on the worksite

### LIGHTS BOTH THE INSIDE OF THE BUCKET AND THE OUTSIDE WORKING AREA



### ERGONOMIC DESIGN WITH ONE HANDED OPERATION



Rotates 300° horizontally and 180° vertically

FL 1 STANDARD	
SPOT	
900 Lumens	8.5h
FLOOD	
1600 Lumens	5h
SPOT/FLOOD	
2500 Lumens	3.5h
IP56	

Powered by DeWALT 20V lithium-ion batteries fits up to 8 Ah

POWERED BY  
**DEWALT**



Clamp function for use on most utility buckets



Second light in mounting handle





MILL SUPPLIES



## 1000V INSULATED TOOL KIT, 5-PIECE

PART 94130

**Delivers a powerful 1500W of Pure-Sine Wave AC power**

- Made in USA
- Five-piece kit includes essential 1000V rated insulated tools including wire stripper, pliers (2) and screwdrivers (2)
- All tools meet or exceed ASTM F1505 and IEC 60900 standards for insulated tools
- Pliers feature induction hardened cutting knives
- Slim tip #2 Phillips and 1/4" cabinet tip screwdrivers allow for greater access into tight spaces
- Diagonal cutters (cat. no. 200028EINS) cut ACSR, screws, nails and most hardened wire
- Side-cutting pliers (cat. no. 2139NEEINS) feature standard cutting knives
- Three-part insulation with underlayer on the pliers and wire stripper provides warning sign that insulation may be compromised.
- Wire stripper (cat. no. 11054EINS) strips and cuts 8-16 AWG solid and 10-18 AWG stranded wire and cleanly shears 6-32 and 8-32 screws;
- do not use for cutting steel wire
- Insulated screwdriver blades are flush with the tip to help reduce nicking the insulation
- Cushion-grip screwdriver handles for greater torque and comfort

**Kit includes:**

- **Wire stripper**  
(cat. no. 11054EINS)
- **Two side-cutter**  
(cat. no. 2139NEEINS)
- **Diagonal-cutter**  
(cat. no. 200028EINS)
- **Screwdrivers** (cat. nos. 6934INS and 6924INS)

8-16 AWG

10-18 AWG

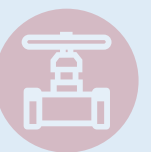
6-32  
8-32**BUY NOW!****KLEIN TOOLS**  
For Professionals... Since 1857™**CLICK HERE FOR A QUICK VIDEO!**1/4"  
(6 mm)

#2

**MADE IN  
USA**

Cat. No.	UPC 0-92644+	Description	Includes
94130	92007-3	5-Piece 1000V Insulated Tool Kit	2139NEEINS, 200028EINS, 11054EINS, 6934INS & 6924INS

**Warning statement:** Visit [www.kleintools.com](http://www.kleintools.com) for safety warnings



MILL SUPPLIES



## MASTER BLUETOOTH® INDOOR PADLOCK FOR BUSINESS APPLICATIONS (4400ENT)

BUY NOW!

**Master  
Lock**

The Master Lock Lockout/Tagout Safety Padlock features a 1-1/2 in. (38mm) wide plastic red body and a 1-1/2 in. (38mm) tall, 1/4 in. (6mm) diameter metal shackle. Designed exclusively for lockout/tagout applications, the durable, lightweight, non-conductive lock body is easy to carry and padlock features high security, reserved-for-safety cylinder with key retaining, to ensure padlock is not left unlocked providing peace of mind from a brand you know and can trust.

## MASTER BLUETOOTH® OUTDOOR PADLOCK

FOR BUSINESS APPLICATIONS (4401LHENT)

The Master Lock No. 4401LHENT Bluetooth® Padlock features a 2-7/32 in. (56mm) wide metal body for durability. The 11/32 in. (9mm) diameter shackle offers 2 in. (51mm) vertical clearance and is made of boron alloy, offering maximum resistance to cutting and sawing. The Master Lock Vault Enterprise system is designed to support **Many Locks and Many Users** with unmatched security, simplicity and accountability. Administrators control individual or system-wide lock access with our convenient web interface, while users enjoy simple, secure access to assigned locks or lock boxes.



## MASTER BLUETOOTH® PORTABLE LOCK BOX

FOR BUSINESS APPLICATIONS (5400ENT)

The Master Lock No. 5440ENT Bluetooth® Portable Lock Box features a 3-1/4" (83mm) wide metal body for durability and a fully removable shackle for convenience. The Master Lock Vault Enterprise system is designed to support **Many Locks and Many Users** with unmatched security, simplicity and accountability. Administrators control individual or system-wide lock access with our convenient web interface, while users enjoy simple, secure access to assigned locks or lock boxes.

## MASTER BLUETOOTH® WALL-MOUNT LOCK BOX

FOR BUSINESS APPLICATIONS (5441ENT)

The Master Lock No. 5441ENT Bluetooth® Wall-Mount Lock Box features a 3-1/4" (83mm) wide metal body for durability. The Master Lock Vault Enterprise system is designed to support **Many Locks and Many Users** with unmatched security, simplicity and accountability. Administrators control individual or system-wide lock access with our convenient web interface, while users enjoy simple, secure access to assigned locks or lock boxes.







MILL SUPPLIES



## M18™ FORCE LOGIC™ 600 MCM CRIMPER KIT PART 2679-22

The most accurate way to crimp.

- Compatible with all M18 batteries
- Easy-open Jaw for fastest repetitive crimping
- In-line design and 350-degree head rotation: easy access in the tightest panels
- PFM (Predictive Force Monitoring) ensures optimal pressure every time, LED light provides instant pressure verification
- Kit includes M18™ Force Logic™ 600 MCM Crimper, M18™ Redlithium™ CP2.0 Battery, M18™ & M12™ Multi-Voltage Charger, and carrying case

**BUY NOW!**

**Milwaukee**



## M18™ FORCE LOGIC™ 10T KNOCKOUT TOOL KIT PART 2676-22

Reduces tedious steps of hole making, improving your speed, and limiting your fatigue.

- Powerful hydraulic pump delivers up to 10 tons of force
- Powerful enough to punch 6" Holes in 12-gauge mild steel, and 14-gauge stainless steel
- EXACT™ Punches and Dies are rated for both mild and stainless-steel punching
- Compatible with competitive accessories
- This cordless 10-ton knockout tool delivers the Easiest Way to Punch



## M18™ FORCE LOGIC™ PRESS TOOL W/ONE-KEY™ PART 2922-22

Industry's first press tool with remote tracking, management, and lockout and is the smallest, most intelligent press tool on the market.

- Lightest in-line design for unrivaled access
- Press ½"-4" pipe connections virtually anywhere you can fit your arm
- Easy Open jaw for one-handed use
- Auto Cycle Ensures Full press every time
- Brushless motor enables 20% more run-time and 10% faster cycles



## M18 FUEL™ PIPE THREADER W/ ONE-KEY™ PART 2874-20

Industry's first cordless pipe threader, revolutionizing the pipe threading process.

- Features AutoStop™ technology that senses severe kickback and automatically shuts the tool off
- Die Head Retention Lock allows for die to lock into the tool before starting thread
- Side-Grip allows for no engagement with the spinning die head before or during threading process
- Faster threading allows for unmatched productivity
- Wirelessly connects to a smartphone to track the tool's location, manage it in inventory, and lock the tool out for added security and protection to your investment





MILL SUPPLIES



## MX FUEL CARRY-ON™ 3600W/1800W POWER SUPPLY PART MXF002-2XC

Provides the best temporary power anywhere

- Provides 3600 peak watts, 1800 continuous watts of pure sine inverter energy
- Power more on-demand with efficient, quiet, and portable power anywhere
- Cordless generator can be powered by a single battery for lightweight portability or two batteries for double the run-time
- The temporary power supply is ONE-KEY™ Compatible
- Track, manage and secure your equipment from your mobile device or computer using the industry's largest Bluetooth™ community tracking network

**BUY NOW!**

**Milwaukee**

## MX FUEL HANDHELD CORE DRILL PART MXF301-2CP

Delivers safer, easier handheld coring and power to core 6" holes in reinforced concrete

- Safer handheld coring
- Easiest coring anywhere
- Power to core 6" holes in reinforced concrete
- LED Level ensures easy, accurate holes handheld
- Integrated Pressure Gauge helps provide the most efficient drilling pressure to maximize productivity and runtime



## M12 GREEN 360° 3-PLANE LASER KIT PART 3632-21

Provides you with all day runtime and best visibility in its class

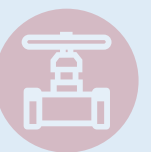
- All day runtime – 15+ hours
- Micro control
- Brightest green laser optimized for distance
- 125 ft. working range
- The three 360° planes include horizontal and two vertical lines for fast and easy alignment, leveling, and squaring

## PACKOUT™ ROLLING TOOL BOX PART 48-22-8426

Modular storage system is the industry's most durable and versatile storage system

- Constructed with impact resistant polymers and metal reinforced corners so it can withstand harsh jobsite environments
- Carry tools, materials, and other jobsite needs
- 250 lbs. capacity
- 9" All-Terrain Wheels
- Modular connectivity with ALL PACKOUT™ Components





MILL SUPPLIES



# SCRUBS CLEANER WIPES

**BUY NOW!**
**SCRUBS®**

**CLICK HERE FOR A QUICK VIDEO!**

## SCRUBS-IN-A-BUCKET

HAND, TOOL & SURFACE  
CLEANER TOWELS

**SCRUBS In-A-Bucket® Hand  
Cleaner Towels empower  
workers to keep working  
when soap and water are  
not a convenient option**

- Will not dry or crack skin, even with repeated use
- Remove oil, grease, paint, adhesive and much more
- Leave no sticky residue and no rinsing required
- Great for use on tools and surfaces



## SCRUBS

STAINLESS STEEL CLEANER WIPES

**Clean, polish, brighten and protect all in one step**

This powerful formula prevents water marks and corrosion and preserves the high luster of stainless steel. They are ideal for bathrooms, drinking fountains, elevators, kitchens and more.

- Convenient one-step program
- Surface can be polished with clean, dry cloth for higher gloss
- NSF® Registered





MILL SUPPLIES



## DISINFECTING WIPES & SPRAYS

**BUY NOW!**
**SCRUBS®**

**CLICK HERE FOR A QUICK VIDEO!**

### SCRUBS MEDAPHENE® PLUS DISINFECTING WIPES



COVID-19 is caused by SARS-CoV-2, a novel coronavirus. \*SCRUBS®

MEDAPHENE® Plus Disinfecting Wipes kills similar viruses and therefore can be used against SARS-CoV-2 when used in accordance with the directions for use against Norovirus on hard, non-porous surfaces. Refer to the CDC website for additional information.

- One-step cleaner/disinfectant/deodorizer
- Portable, safe and easy to use
- No spraying or run-off
- Visit <https://am-ind.com/disinfecting> for specific kill claims
- Available sizes: Single-wipe pack, 73-wipe container, 150-wipe bucket

### DYMON® MEDAPHENE® PLUS DISINFECTING SPRAY



**Medaphene® Plus Disinfecting Spray is an effective disinfectant and cleaner for hard surfaces and controls the growth of many disease-causing organisms. The formula leaves behind a fresh, clean smell wherever it is used.**

- Tuberculocidal, Staphylocidal, Virucidal\*, Fungicidal, Pseudomonacidal
- Use to disinfect inanimate environmental surfaces.
- Visit <https://am-ind.com/disinfecting> for specific kill claims
- Available sizes: 15.5 oz aerosol can

### DYMON® DO-IT ALL™ BRAND GERMICIDAL CLEANER



do-it ALL™ Brand Foaming Germicidal Cleaner is an EPA registered spray and wipe formula. Proven to clean, disinfect and deodorize, do-it ALL™ can be used on most hard, nonporous surfaces to leave them clean and free from odors. Safe to use in hospitals, institutions, and many other places.

Coronavirus Disease 2019 (COVID-19) is caused by SARS-CoV-2. do-it ALL Brand Foaming Germicidal Cleaner, EPA Reg. 44446-23-11694, kills similar viruses and therefore can be used against SARS-CoV-2 when used in accordance with the directions for use against Canine Parvovirus on hard, non-porous surfaces. Refer to the CDC website for additional information.

- Proven to clean, disinfect, and deodorize most hard, non-porous surfaces in one step
- Foam clings to vertical surfaces permitting longer contact time
- EPA Registered spray & wipe formula
- Controls mold, mildew, and the odors they cause
- Visit <https://am-ind.com/disinfecting> for specific kill claims
- Available sizes: 18 oz. aerosol can



MILL SUPPLIES



## DISINFECTING WIPES & SPRAYS

**SCRUBS**  
BRAND
**BUY NOW!**


### SCRUBS

#### HAND SANITIZER WIPES

- Kills 99.9% of Germs
- Dissolves Bio-film
- Prevents cross-contamination
- Replaces alcohol gels, which do not remove contaminants
- Reduces the risk of infection and disease
- Broad Spectrum
- Can be used where soap and water are not available


**CLICK HERE FOR A QUICK VIDEO!**

### SPRAY NINE

#### MULTI-PURPOSE CLEANER & DISINFECTANT

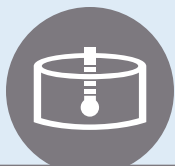
Spray Nine's professional-strength cleaning power has been trusted by millions of professionals and consumers for over 50 years. Spray Nine works hard to remove all types of dirt, grease, grime and stains.

#### One Product, NINE Uses!

1. Cleans
2. Degreases
3. Disinfects against viruses in seconds
4. Disinfect against bacteria in seconds
5. Sanitizes in seconds
6. Kills fungus in 3 minutes
7. Deodorizes
8. Controls mold & mildew
9. Removes stains


**BUY NOW!**
**Spray Nine**  
Brand





# PETROLEUM MEASUREMENT/INSPECTION EQUIPMENT & REPAIR

CLICK HERE TO VISIT THE PETROLEUM MEASUREMENT/INSPECTION EQUIPMENT & REPAIR PAGE ON OUR WEBSITE!

We are the industry's premier source for quality petrochemical gauging and sampling products as well as a full-line of PPE supplies, gas detection monitors, and SCBA equipment.

## PETRO CHEMICAL EQUIPMENT

We carry and stock a vast range of process equipment to ensure the solution you need is readily available.

- Gauging & Sampling Products
- Tapes & Bobs
- Bottle Carriers
- Sample Boxes
- SCBA Equipment
- Thermometers & Thermoprobes
- Gauging Pastes
- Calibration Gas
- Gas Detection Monitors
- Tally Books
- Flame Resistant Clothing
- Chemical-Resistant PPE



**SHOP PETRO MARINE  
SITE NOW!**



**Steel Gauging Tapes**

**SHOP NOW!**



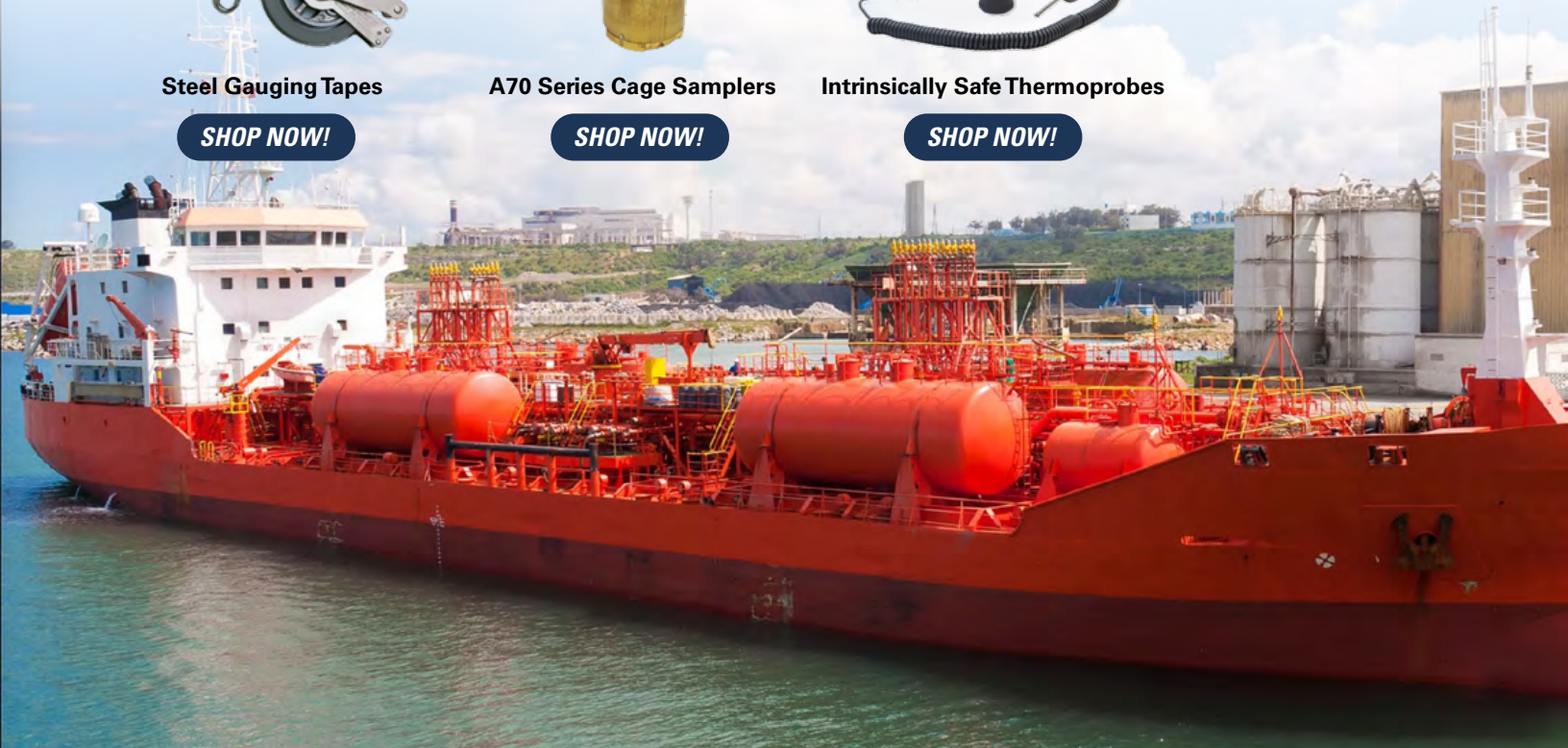
**A70 Series Cage Samplers**

**SHOP NOW!**



**Intrinsically Safe Thermoprobes**

**SHOP NOW!**







PETROLEUM  
MEASUREMENT/  
INSPECTION  
EQUIPMENT & REPAIR

## WE CAN HELP YOU ENSURE SMOOTH SAILING (LITERALLY)

Our Petro Marine Oil & Gas Team ranks among the most experienced in the industry, with each member averaging over fifteen years or more in the field. We leverage their expertise, along with our strong vendor partnerships, to deliver unparalleled support. We can help you select maritime products, repair and calibrate equipment, perform safety audits, and so much more.

## SURVEYS & AUDITS

We provide the services that ensure compliance and increase your safety and efficiency.

- SCBA Flow Testing & Repair
- Respirator Fit Testing
- Electronic Thermometer Calibration
- Thermoprobe Calibration & Repair
- Gauging Tape Certification
- Breathing Air Delivery Systems
- On-Site Safety & Compliance Audits
- Meter Calibration & Repair

REQUEST A SERVICE

